

SUPPLEMENTARY REGULATIONS

Round 5 of the



***2018 American Rally Association
Championship Series***

Paul Bunyan's Ride and 10,000 Lakes Regional Rally's

August 24 - 25, 2018

Event Sponsor:



Sanctioned by:



Organized and Promoted by:
Muscatell Ojibwe Forests Rally Committee

These Regulations are presented as supplements to the 2018 Edition of the GCR's, RCR's, TR's, and associated bulletins as published by the American Rally Association.

Section 1: Event Timetable – All times are Central Daylight Time (Subject to change)

Wednesday, August 22

8:00 – 14:00	Testing	Paul Bunyan Forest
17:00 – 20:00	Subaru Meet & Greet	Muscatell Subaru (Moorhead, MN)
18:00 – 22:00	Recce & Event Registration	Pavilion, Detroit Lakes, MN

Thursday, August 23

By Appointment Only (Contact Registrar)	Recce Registration	Pavilion, Detroit Lakes, MN
7:00-7:30	Recce Meeting	Pavilion, Detroit Lakes, MN
7:00 – 20:00	Recce	Forest Stages
13:00 – 18:00	Tech Inspection	Hough Inc., Detroit Lakes, MN
18:00 – 22:00	Competitor & Service Registration	Pavilion, Detroit Lakes, MN
18:00 – 22:00	Volunteer Registration	Pavilion, Detroit Lakes, MN

Friday, August 24

7:00 – 7:45	OFR Committee Meeting	Pavilion, Detroit Lakes, MN
By appointment Only	Tech Inspection	Hough Inc., Detroit Lakes, MN
By appointment Only	Competitor Registration (Contact Registrar)	Pavilion, Detroit Lakes, MN
8:00 – 10:00	Volunteer Registration	Pavilion, Detroit Lakes, MN
8:00 – 8:30	Stewards Meeting	Pavilion, Detroit Lakes, MN
8:30 – 8:45	Seeded Draw	Pavilion, Detroit Lakes, MN
9:00 – 9:15	Timing & Timecard Training	Pavilion, Detroit Lakes, MN
9:15 – 10:15	Novice Drivers' Class	Pavilion, Detroit Lakes, MN
10:30	Stage Captain Meeting	Pavilion, Detroit Lakes, MN
10:00	Volunteer Meeting	Pavilion, Detroit Lakes, MN
9:00	Medical/Sweep Meeting	Pavilion, Detroit Lakes, MN
9:00 – 10:00	Medical Training	Pavilion, Detroit Lakes, MN
11:30- 11:45	Mandatory Drivers' Meeting	Pavilion, Detroit Lakes, MN
12:00	MTC 1 – Begin Day 1	Washington Avenue, Detroit Lakes, MN
12:00 – 13:30	Parc Exposé	Washington Avenue, Detroit Lakes, MN
12:30	Volunteers Leave for Stages	Pavilion, Detroit Lakes, MN
13:42	FCO – Fairgrounds	Fairgrounds, Detroit Lakes, MN
17:54	FCI – Service	Northern Lights Casino, Walker, MN
21:31	MTC2 – Finish Day 1	Northern Lights Casino, Walker, MN
21:45	Stewards Meeting	MTC2

Saturday, August 25

9:30	Volunteers Leave for Stages	Itasca Service
10:45	Drivers Meeting	Itasca Service
12:00	MTC3 – Begin Day 2	Itasca Service
14:28	FCI – Itasca Service 1	Itasca Service
17:56	FCI – Itasca Service 2	Itasca Service
20:00	MTC4 – Finish Day 2	Fairgrounds, Detroit Lakes, MN
20:00	Volunteer & Competitor Banquet	Pavilion, Detroit Lakes, MN
20:30	Podium Ceremony	Pavilion, Detroit Lakes, MN

Section 2: Rally Headquarters

The rally headquarters is the Detroit Lakes Pavilion. All of the rally-related meetings will be held at the Pavilion in Detroit Lakes, MN unless otherwise noted. Rally Headquarters is shown on a map in Appendix 1.

The address for the Detroit Lakes Pavilion is: 1361 Washington Ave, Detroit Lakes, MN 56501

Parking is located behind the Pavilion in the city park, and can be accessed by turning from Washington Ave to N. Shore Dr., and turning into the park.

Section 3: Airports

The nearest major passenger airport is Hector International Airport located at 2801 32nd Ave NW, Fargo, ND 58102. It is about 60 minutes from Detroit Lakes and has direct flights to many locations around the country. Please see www.fargoairport.com for more information.

Section 4: Organization

Organizing Committee:

Chairman	Jonathan Atkins	701-367-9867	chairman@ojibweforestrally.com
Clerk of the Course	Greg Messler	612-282-1261	asstrallymaster@ojibweforestrally.com
Chief of Emerg. Svcs. & Sweep Coordinator	Paul Ahles	612-590-8554	emergencyservices@ojibweforestrally.com sweep@ojibweforestrally.com
Chief of Controls	Nathan & Elias Koppenhaver	701-541-7348 701-491-0530	controls@ojibweforestrally.com
Chief of Scrutineering	Trevor Matheny	218-260-0491	scrutineering@ojibweforestrally.com
Registrar	Nicky Nelson	612-801-3332	Nelson_nicky76@hotmail.com
Chief of Communications	Peter Winters	763-452-8238	n0rug@yahoo.com
Chief of Bannering	Rick Skelton Heather Skelton	320-309-1220	bannering@ojibweforestrally.com

Chief of Service	TBD		service@ojibweforestrally.com
Chief of Special Stage	Matt Halseth	701-371-9192	mhalseth@muscatell.com
Treasurer	Kerry Freund	612-926-1722	treasurer@ojibweforestrally.com
Media/Marketing	Tucker Combs	651-328-0141	tckrcombs@gmail.com

American Rally Association Stewards:

Senior Steward: J.B. Niday
ARA Steward: Greg Healey
Event Steward: (TBD)

American Rally Association National Series Manager: Doug Shepard

Official Notice Board

The Official Notice Board will be located at the Detroit Lakes Pavilion prior to the rally. After the start of the rally, the Official Notice Board will be brought to all service locations, Parc Expose during the rally and the final awards ceremony (in the Pavilion).

Section 5: Entry and Entry Fees

Entries and entry fees shall be submitted online at www.enterrally.com. You may contact Nikki at nikki@usacracing.com for help with the online entry system.

Entry Fee Schedule:

Early Entry: Registration Open to July 27
Regular Entry: August 1 – to close of registration

Event	Early Entry 11:59 PM July 27	Regular Entry July 28-August 25
Muscatell Ojibwe Forests Rally National	\$1350	\$1650
Paul Bunyan’s Ride Regional	\$500	\$600
10,000 Lakes Regional	\$500	\$600
Both Regionals	\$950	\$1150

All competitors will receive printed and bound copies of all information necessary to complete the rally or follow the service route successfully. Printed materials can be picked up at event registration. All race documents will be provided as a digital download once finalized. For those teams who wish to go green this year, an option to opt out of the printing package will be provided during entry registration. Those teams who opt out of the printing package will receive a \$75 discount on their entry.

Section 6: Description

The Muscatell Ojibwe Forests Rally will take place from Wednesday, August 22 to Saturday, August 25. There will be 15 stages, totaling 132 miles. The total event distance will be around 398 miles.

The Paul Bunyan's Ride Regional Rally will be on Friday, August 24 with 7 stages. The total stage mileage will be 54 miles; the total distance for the rally will be around 204 miles.

The 10,000 Lakes Regional Rally will be on Saturday, August 26 with 8 stages. The total stage mileage will be 77.76; the total distance for the rally will be around 195 miles.

The final details of the route, as well as time controls, regrouping points, and route controls are described on the time schedule contained in the Route Book. The Route Book and the final itinerary will be issued after successful completion of Registration.

Fuel Distances

Stage	Transit Distance	Stage Distance
OFR Day 1 - Friday		
MTC1 to SS1	1.07	0.46
SS1 to Fuel Depot	41.78	-
Fuel Depot to SS2	29.34	10.76
SS2 to SS3	4.70	6.04
SS3 to SS4	5.81	10.14
SS4 to Service 1	18.67	
Service 1 to SS5	18.76	10.76
SS5 to SS6	4.70	6.04
SS6 to SS7	5.81	10.14
SS7 to MTC 2	18.67	
Day 1 Totals	149.31	54.34
OFR Day 2 – Saturday		
MTC 3 to SS8	3.66	9.08
SS8 to SS9	12.72	10.38
SS9 to SS10	13.56	12.74
SS10 to Service 1	12.15	-
Service 1 to SS11	3.66	9.08
SS11 to SS12	12.72	10.38
SS12 to SS13	13.56	12.74
SS13 to Service 2	12.15	
Service 2 to SS14	3.66	9.08
SS14 to SS15	20.78	4.29
SS15 to MTC 4	8.14	
Day 2 Totals	116.76	77.77

There may be O-Controls (Observation) encountered during the weekend. Radar guns may be employed to check speeds. Competitors are asked to remind their service crews that they must also stop at any O-controls encountered on their transit route and that any penalty they accrue will be applied towards the team(s) they provide service for.

Section 7: Registration

Documentation

The completed ARA registration must accompany the entry fee. The waiver must be signed by the driver, co-driver, and all service crew by the close of registration. All applicable documents must be

presented at registration and must be valid on the days of the event. Rally licenses must be obtained prior to the start of competition and are available at <http://www.rallylicense.com/>

Teams (for both driver and co-driver) must provide to the registrar at entry:

- Valid government issued drivers licenses
- ARA licenses
- Proof of insurance with declaration page for all vehicles (competition and service)

Documents sent to the registrar by August 20th will receive a confirmation email allowing them to express register for both Recce and Event registration on Wednesday. Please send the email with the subject line of your car number and registration documents. Send information to: Nelson_nicky76@hotmail.com.

Maximum Number of Entries

The maximum number of entries will be 60. If more than 60 entries are received, entry will be determined on a “first pay / first serve” basis (i.e. confirmation of payment to ARA must be received before your entry is considered). A wait list will be utilized. The organizer reserves the right to allow more entries.

Withdrawal of Entry

Withdrawal of an entry MUST be made by email to the Ojibwe forests Rally Competitor Registrar: Nelson_nicky76@hotmail.com.

Refund Policy

An entry may be withdrawn:

- a) without penalty, up to 48 hours before the start of registration;
- b) with up to 25% of the entry fee in penalty, less than 48 hours before the start of registration (percentage at the organizer's discretion);
- c) with up to 100% of the entry fee in penalty after the opening of registration (percentage at the organizer's discretion).

Section 8: Scrutineering

August 23, 2016	13:00-18:00	Hough Inc., Detroit Lakes, MN
August 24, 2016	<i>By Appt. only</i>	Hough Inc., Detroit Lakes, MN

The address for Hough Inc. is: 18262 Old Pit Rd, Detroit Lakes, MN 56501

Any competitor wishing to schedule a Tech appointment for Friday, August 24 must contact the Chief of Scrutineering in advance.

All competition vehicles must fully meet the requirements of the 2018 American Rally Association Competition Rules (and Bulletins if applicable) before starting the event. Any vehicle found not to be in compliance will not be allowed to start.

The car must be clean (washed) inside and out when presented for scrutineering. Vehicles presented for tech inspection that are dirty will be refused scrutineering until they are cleaned. Sound/noise levels may be tested at scrutineering.

Section 9: EZTrak Vehicle Tracking Devices

The American Rally Association is equipping all competitors and course cars at the 2018 Ojibwe Forests Rally with EZTrak vehicle tracking devices. These devices will enable event officials to know your location and movement status in real time and to be automatically alerted of any irregularities (e.g. you have come to a stop on an active stage). They will also enable everybody who has access to the Internet to follow your movements and unofficial stage times at live.americanrallyassociation.org. A free iOS or Android smartphone app is also available on this same Web page, or you can search for ARARally in the Apple app store or in Google Play.

Distribution.

At recce registration you will be given two EZTrak devices to place in your recce car. You must transfer these devices to your rally car prior to entering the Friday morning Parc Exposé.

Installation.

Instructions for where and how to instal the EZTrak devices in your recce car and in your rally car are provided in Appendix 3 of these Supplemental Regulations.

Operation.

The tracking devices perform all of their monitoring, motion analysis, and reporting functions automatically with no user interaction.

Return.

The two EZTrak devices will be removed either immediately prior to or immediately after the final MTC at the end of the event. If you DNF you must return your 2 devices to chief scrutineer or his designee at the Service Area or at the final MTC of the event. Your vehicle log book will be held until your EZTrak devices have been returned. Competitors will be charged for missing or damaged EZTrak devices.

LIABILTY DISCLAIMER ALL THE INFORMATION PROVIDED BY THE TRACKING SYSTEM IS SUBJECT TO ERRORS AND INTERRUPTIONS. MOTORING EVENT SERVICES, THE EVENT ORGANIZERS, THE SANCTIONING BODY AND THEIR REPRESENTATIVES MAKE NO GUARANTEES ABOUT THE AVAILABILITY, ACCURACY, TIMELINESS OR USEFULNESS OF VEHICLE LOCATION AND TIMING DATA; OF WIRELESS COVERAGE IN THE OPERATIONAL AREAS OF THE EVENT; OR FOR ANY INTERRUPTIONS IN CONNECTIVITY. MOTORING EVENT SERVICES, THE EVENT ORGANIZERS, THE SANCTIONING BODY AND THEIR REPRESENTATIVES WILL NOT BE HELD RESPONSIBLE IN ANY WAY FOR ANY MISHAP OF ANY NATURE AS A RESULT OF THE USE OF THE TRACKING SYSTEM AND ARE NOT RESPONSIBLE FOR THE CONSEQUENCES OF ANY DECISIONS MADE BASED ON THE INFORMATION PROVIDED BY THE SYSTEM.

Section 10: Event Sponsor Advertising

All competing vehicles will be required to place event sponsor decals on their car, in the space allocated to event sponsor advertising as described in the 2018 American Rally Association Logo Standards document. Competitors choosing to not run event sponsor advertising, will be required to pay \$1,000 to the Muscatell Ojibwe Forests Rally.

For the 2018 Muscatell Ojibwe Forests Rally, we may be issuing sponsor decals to be placed in the event space, which is located below the ARA number panel on each door.

Section 11: Service

See Section 5, Entry and Entry Fees for Service Route Documents.

Service space signup will be available at Service Registration times (6:00 to 10:00 PM, Thursday, August 23, 2018). Early signup will be available once teams are registered. On-line maps will be available in mid-July. Please email service@ojibweforestrally.com with your request.

There will be designated service areas. Service spaces will be assigned at all service locations throughout the duration of the event.

The standard Service space will be 20 ft. X 60 ft., with entrance only via one 20 ft. side. If you need more than that, you must register for additional space(s) of 20 ft. X 60 ft as needed. Additional space will be charged at \$150 for additional space. This will provide overall service areas of 40 X 60, 60 X 60, etc. There is no oversize vehicle specifications, but you must be able to place your vehicle(s), trailer(s) and service equipment all within the space(s) assigned to you.

All service locations will be ready for service vehicles three hours prior to first car in. If you need to be in service prior to then contact the Chief of Service at service@ojibweforestrally.com.

In Itasca Service on Saturday, absolutely no alcohol use will be permitted. This includes anyone on the Service area, no matter what their connection to the rally - all teams, crews, guests, and workers. This includes any time you are on the Service grounds, no matter if Service is complete or not.

Vehicles that are not officially registered with a team as a service vehicle will be not allowed in the service area. All officially registered vehicles must display registration cards with prominent car number on their dash at all times. Service vehicles must be declared at registration. No at service registration will be provided. Vehicles without cards will be considered spectator vehicles and not permitted into the service area for any reason. Limited parking will be available outside the service area.

Service crews will be required to display the organizer supplied car number in the front windshield of every service vehicle.

Service crew members found traveling in the vicinity of the stages during the event in an unregistered vehicle will be considered to be performing illegal service and the team(s) penalized per ARA rules.

Tarps/spill cloths must be placed under cars for all servicing operations. Service areas not cleaned will be subject to \$150 fine.

No on-ground grills, or disposing of any charcoal, briquettes, etc., are permitted. Any non-gas grill ignition sources must be completely COLD or removed in a fire-proof container.

Service crews must notify the service area coordinator when they leave the service area to retrieve a car.

Competitors are not required to drive through fuel depots if they don't require fuel. Purchasing fuel from commercial gas stations located along transit sections of the route is permitted. All work involved in adding such fluids must be performed by the driver and/or co-driver if outside of the service area. No added allowance is included in transit times for such fueling.

On Friday, August 24, service will be in Walker, MN.

On Saturday, August 25, service will be near the Rock Creek store in Lake Itasca, MN (check with service registration). Follow the direction of the Muscatell Ojibwe Forests Rally volunteer staff when parking your service vehicle at both locations. Teams may have an assigned location based on running order or space needs.

Section 12: Course Notes

Course notes will NOT be provided at the 2018 Muscatell Ojibwe Forests Rally. Open Recce will be provided on Thursday August 23, 2018.

Section 13: Recce

Open Recce will be offered for the 2018 Muscatell Ojibwe Forests Rally on Thursday, August 23.

A recce meeting will be held at 7:00 am on Thursday, August 23. The meeting is optional, but information will be provided to assist those teams who are unfamiliar with open recce.

Thursday, August 23

7:00 - 20:00

Recce

Paul Bunyan, Two Inlets, Smokey Hills Forests

Section 14: Practice

Practice Stages

August 22, 2018..... 8:00 – 14:00Itasca, MN

Practice will be on a stage near Itasca, MN. Registration and servicing information will be available at the Rock Creek Store in Itasca, MN.

Practice Stages will be run in 2 hour time blocks. Practice will cost \$150 per 2 hour time block. at least one time block must be purchased in advance. Safety crews will not be on site if no teams have purchased a particular time block. If a team has purchased an early time block, they may purchase additional time at the Rock Creek Store at the end of their current session.

Competitor participation is completely voluntary. All competitors and any guests must sign the waiver.

The Practice Stages are not open to the public. All passengers on stage must sign the waiver and be approved by the Chief of Emergency Services. Driver and Co-Driver must wear full racing suit, helmet and SFI 38.1 head-and-neck restraint device.

Practice Stage pricing and availability: www.enterrally.com

Section 15: Traffic Infringements and Other Minnesota Laws

Rally Officials will review any traffic citation received during the running of the event by any crew or service crew.

Important State Laws to be aware of:

- It is forbidden to drive on public roads with auxiliary lights turned on.
- Your headlights must be turned on if the windshield wipers are in use.

Section 16: Testing

Additional testing days or times may be made available, contact the Muscatell Ojibwe Forests Rally Chairman for more details.

Section 17: Controls, Timecards and Parc Expose

The modified FIA timing system will be utilized, so competitors unfamiliar with this system are urged to attend the timecard explanation.

The entries on the competitor vehicle Timecard are the official record from which scoring decisions will be made. It is the responsibility of the competitors to verify all entries made on the Timecard at the time of entry.

If you DNF from any of the events, turn your timecard into Safety Sweep or another event official.

PARC EXPOSE

*The Parc Expose on Friday, August 24 is **mandatory**. Drivers and Co-Drivers with their competition vehicle will be required to check in prior to the 14:00 start time. A penalty of \$150 will be assessed if the team does not check in by 14:00.*

Competitors cannot leave Parc Expose until their scheduled out time, unless directed by a rally official.

Section 18: Amendments to the Regulations - Supplements

Amendments or additional provisions to these regulations will be announced by dated and numbered information bulletins. The bulletins will be regarded as an integral part of these regulations. The bulletins will be posted on the official notice board, and may also be directly communicated to the participants during the running of the event.

If a bulletin is issued on the course, participants must acknowledge receipt by signature at time control points, unless this procedure is materially impossible.

Section 19: Sanction Exceptions from American Rally Association Rules

- Decisions affecting the rally can be made equally by either the Chairman or Clerk of the Course.

Section 20: Damage to property in the City of Detroit Lakes, service locations and Debris Left Behind

Drivers will be held financially responsible for damage to facilities or service locations (i.e., guard rail, gates, fences, buildings, etc.) due to off-course excursions or other incidents. As the Muscatell Ojibwe Forests Rally may be charged for cleanup of these areas, drivers and crews are to clean their service areas before they depart. Garbage is to be placed in proper receptacles and it is imperative that participants leave their services spaces without clutter (i.e., tires, loose garbage, etc.) Tires are to be removed by the competitors, as there is no provision for their disposal. Hazardous wastes, including oil, solvents, brake clean, brake fluid, antifreeze, etc., **MUST** be taken with you when leaving any service location.

Section 21: Provisional Scores

Provisional scores will be posted at the finish location at the pavilion on Saturday evening or as early as possible. Scores will be final 30 minutes after posting or after all claims are resolved.

Section 22: Awards & Banquet

The Muscatell Ojibwe Forests National Rally awards will be determined and presented by American Rally Association staff. The prize giving will take place at the Pavilion in Detroit Lakes, MN on Saturday, August 25.

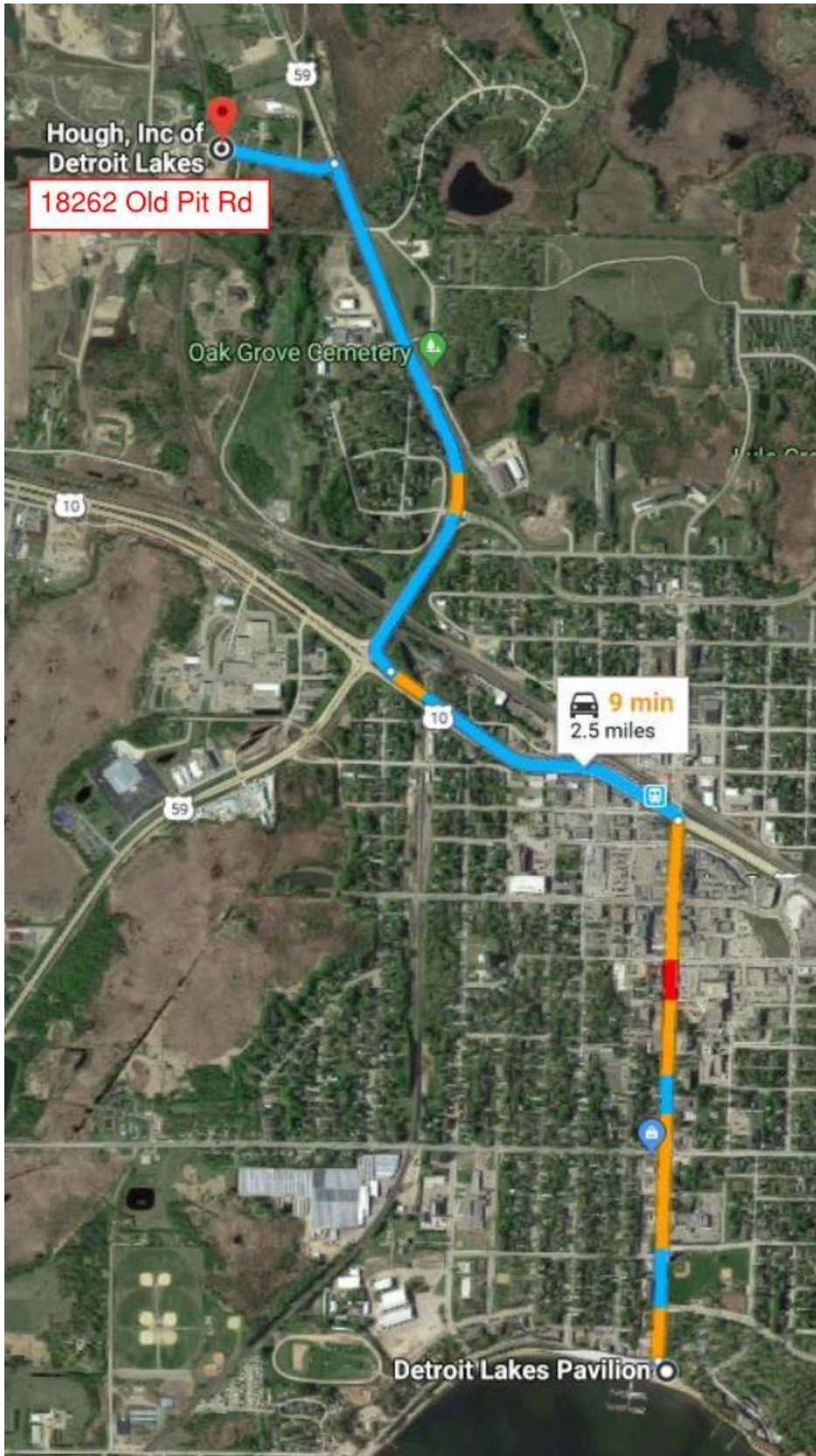
Paul Bunyan's Ride and 10,000 Lakes Regional Rally's will award trophies to the top finishing drivers and co-drivers. Classes with less than three entries will not be awarded trophies. Based on the number of entries in each class as of August 10, 2018, additional trophies may be awarded.

There will be a banquet in the Pavilion in Detroit Lakes at the completion of competition Saturday August 25. All volunteers and competitors are welcome and encouraged to attend.

Appendix 1 – Rally HQ Location



Appendix 2 – Map to Tech Inspection Location



Appendix 3 – EZTrack Installation Guidelines

Competitor movements and stage times can be followed on the Web at live.americanrallyassociation.org and on a free iOS and Android smartphone app – search the applicable app store for “ARARally”.

RECONNAISSANCE CAR INSTALLATION

The preferred placement is on the dashboard or the rear package shelf secured with a supplied piece of industrial strength adhesive Velcro with the BLACK SATELLITE DEVICE placed on top of the YELLOW CELLULAR DEVICE with their internal antennas toward the front of the car and facing up to the sky through the windshield or the back window.



It is YOUR responsibility to move the 2 devices from your recce car to your rally car prior to the pre-event Parc Exposé.

RALLY CAR INSTALLATION

The Black Satellite Device must be secured with the supplied Velcro or a zip tie such that **the EZTrak label is facing the sky** through the windshield or the rear window.



On the roll cage along the A-pillar



On the dashboard



On the rear package shelf

The Yellow Cellular Device must be secured with the supplied RAM mount clamped to a component of the roll cage such that the arm of the mount places the device **as close as possible to a window with the red label on the device easily readable from the outside.**



On the roll cage along the A-pillar



On a roll cage main hoop, connecting member or backstay

