



Bloomington
Subaru



SPECTATOR GUIDE
AUGUST 19-20, 2022



CONTENTS

RallySafe App	3
Schedule.....	4
Service Locations.....	5
Safety.....	6-7
Spectator Locations.....	8-11
Message From the Chair.....	12
LIVE Streaming Info	13
Event History	14
Autographs	15
Sponsors	16-17
How Rally is Used as Therapy for Veterans	18

FOLLOW THE CARS with RallySafe

All the rally cars competing at an American Rally Association National event are equipped with RallySafe trackers. You can now follow your favorite competitors progress through every stage and see their times LIVE!

Follow online or download the RallySafe app to stay up-to-date on the go. Apple and Android apps are both available.



SCHEDULE

Forest Stages are FREE to the public!
Super Special at Soo Pass Ranch =
Gate entry - \$10, VIP - \$60 (plus fees)
NEW - Camping also available.

TUESDAY, AUGUST 16

Volunteer Camping Opens

WEDNESDAY, AUGUST 17

Testing

THURSDAY, AUGUST 18

Recce 7:00AM

Spectator Camping Opens

Volunteer Check-in 6-9:00PM

Kick-Off Party 7-10:00PM

SPECTATORS ARE WELCOME

to all events except those in blue.

FRIDAY, AUGUST 19

Tech Begins 9:00AM

Drivers Meeting 12:30PM

Stage 1 Crossroads Jump 1:30PM

Stage 4 Refuge 3:05PM

Service 3:35PM

Stage 5 Crossroads Jump 5:05PM

Stage 8 Refuge 6:36PM

SATURDAY, AUGUST 20

Service 12:25PM

Soo Pass Ranch Opens 4:30PM

Final 4 Stages (Soo Pass Ranch).. 5:45PM

Podium Celebration 9:00PM

Volunteer Banquet 9:00PM

****For details on Thursday's Kick-Off
Event follow the Ojibwe Forests
Rally Facebook page.**

**SCAN TO PURCHASE
TICKETS & CAMPING**



SERVICE LOCATIONS

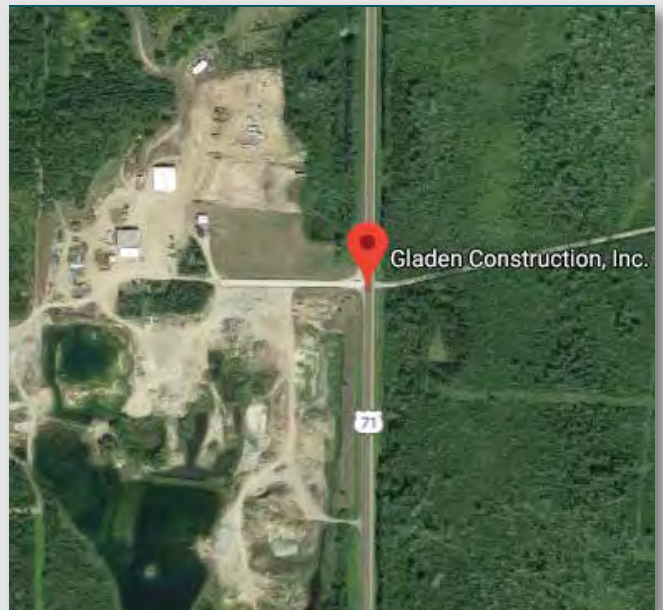
FRIDAY, 3:35PM

SATURDAY, 12:25PM

GLADEN

CONSTRUCTION INC
40739 HWY 71
LAPORTE, MN 56461

- Gladen Construction, Inc.
- 40739 US-71, Laporte, MN 56461
- Located 35 miles north of Park Rapids, MN on US 71
- **Follow direction of Marshals and signs for parking!**



CROSSROADS JUMP

FRIDAY, 1:30 & 5:05PM

- Approximately 7.6 miles north of Akeley, MN
- Hundreds or possibly even over 1,000 spectators.
- Park smart on one side of the road. Obey the Marshals.
- Be prepared for bugs, heat, dust and the biggest Rally jump in Minnesota!
- **For best viewing on this stage and all stages, ARRIVE EARLY!**

An iconic stage for Minnesota rallies and always a fan favorite! Drivers come flat-out down the road to this wide intersection with a slightly off camber jump, which sends cars flying through the air!

Rally cars are spectacular and exciting, but can do the unexpected. **For your safety and the safety of everyone involved with the Ojibwe Forests Rally please:**

- Listen to the marshals.
- Follow any instructions from rally officials.
- Know that signage, barricades and banner tape are in place for your protection. Do not move them.
- Be aware of your surroundings and use them as cover from the unexpected and debris.
- Never walk on an active rally stage.
- Know that not every rally car will be the same. Use common sense regarding where you are watching.
- Speak up. If you are uncomfortable with something you see tell the rally volunteers.



**WARNING
MOTOR SPORT
CAN BE
DANGEROUS**

We have taken every reasonable safety precaution, but unforeseen accidents can happen. You are at your own risk. Be alert.

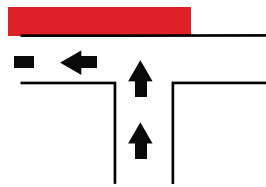
Study the Diagrams:

All **RED AREAS** are 'NO-GO'.

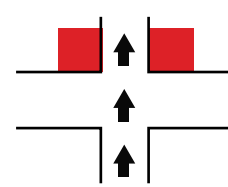
These areas are extremely dangerous.

DANGER

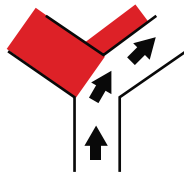
"T" Junction



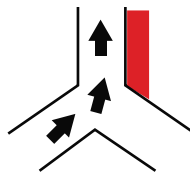
Cross Road



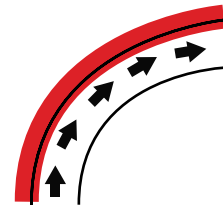
"Y" Junction



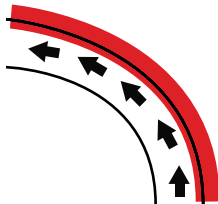
"Y" Junction



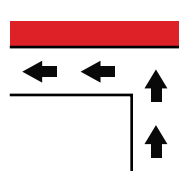
Left Bend



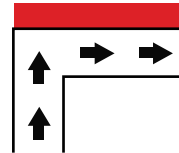
Right Bend



90° Left

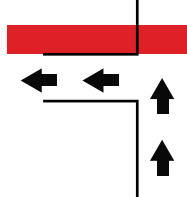


90° Right



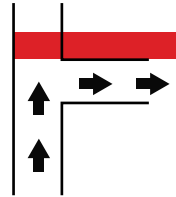
90° Left Road

At Side

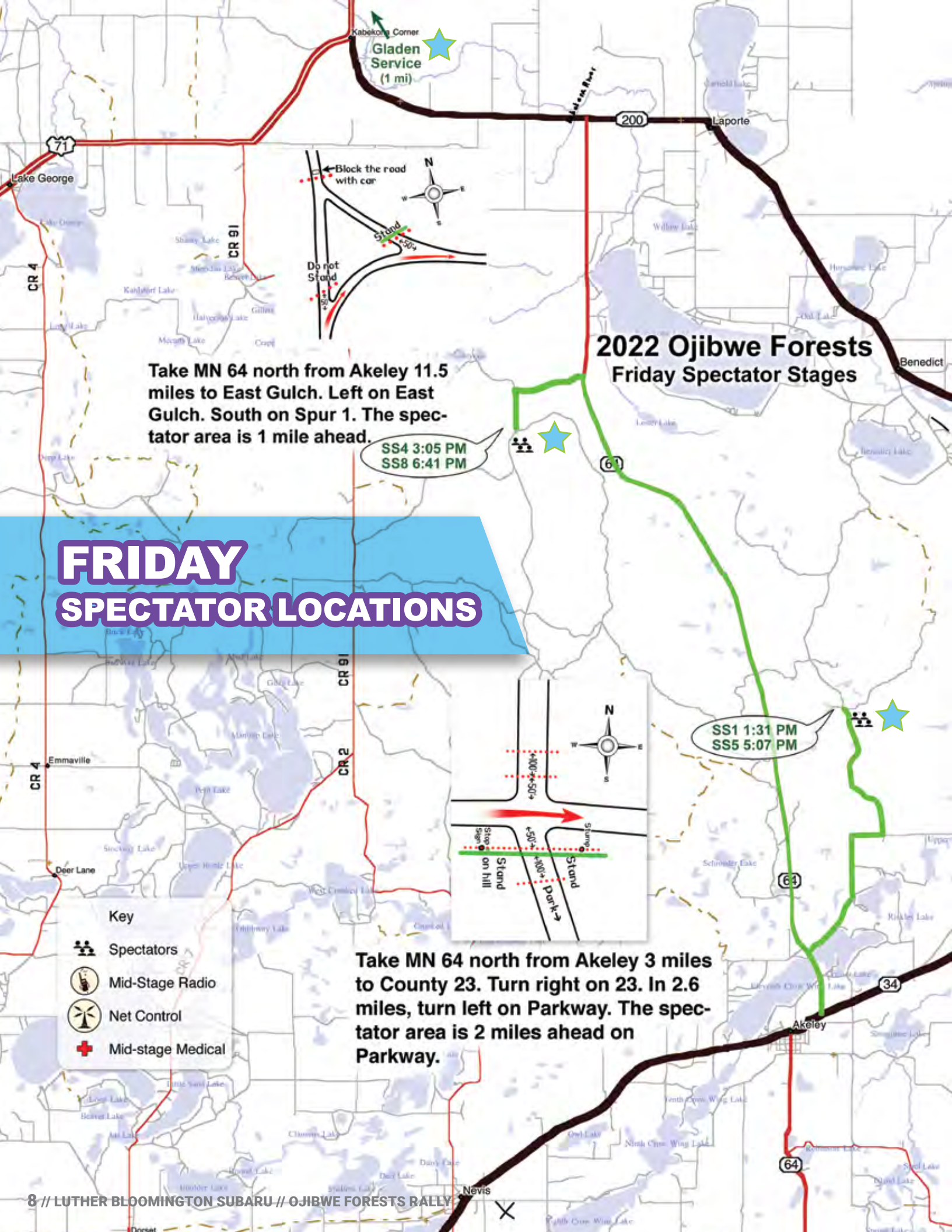


90° Right Road

At Side



Always be alert
and NEVER stand
in the red areas.



Kabeok Corner
Gladden
Service
(1 mi)

200

Laporte

71

Lake George

CR 4

CR 91

Take MN 64 north from Akeley 11.5 miles to East Gulch. Left on East Gulch. South on Spur 1. The spectator area is 1 mile ahead.

SS4 3:05 PM
SS8 6:41 PM

2022 Ojibwe Forests Friday Spectator Stages

FRIDAY SPECTATOR LOCATIONS

CR 4

Emmaville

Deer Lane

Key



Spectators



Mid-Stage Radio



Net Control



Mid-stage Medical

Take MN 64 north from Akeley 3 miles to County 23. Turn right on 23. In 2.6 miles, turn left on Parkway. The spectator area is 2 miles ahead on Parkway.

64

34

64

Akeley

Nevis

SOO PASS RANCH SUPER SPECIAL

SATURDAY, 4:30PM

- > Final 4 Rally Stages
- > Vendors & Food Trucks
- > Rally Super Store
- > Ojibwe Forests Rally Merch
- > Jumbo Screens with LIVE Streaming
- > And More!

ADMISSION = \$10, VIP = \$60
BUY YOUR TICKETS EARLY!



O'Reilly
AUTO PARTS

VIP ACCESS //

With the VIP Super Special Ticket you get some of the best most thrilling views of the rally! Close parking, an exclusive t-shirt and complimentary food ticket.

CAMPING //

Camp right at Soo Pass Ranch! Available, Thursday, August 18 through Saturday, August 20, 2022. Includes: Admission to SuperSpecial Stages, parking, and podium celebration.

Fee is for one campsite with a maximum of 4 people. The sites are best suited for campers under 28'. Sites are typically 25'x40'. Please bring your own power cord.



SCAN TO PURCHASE
TICKETS & CAMPING



Legend

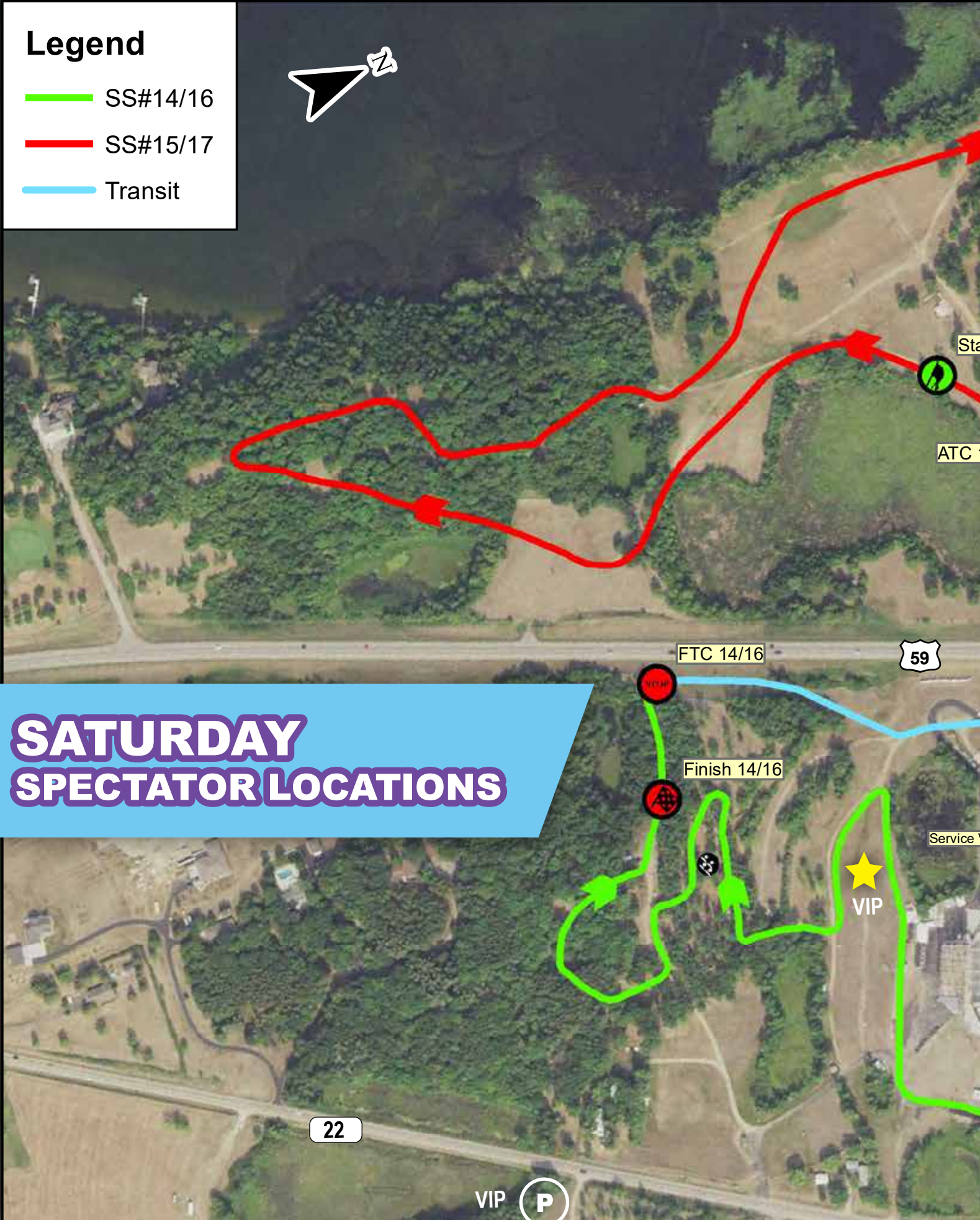
SS#14/16

SS#15/17

Transit



SATURDAY SPECTATOR LOCATIONS



PRESENTED BY:



FOLLOW OJIBWE FOREST RALLY

www.OjibweForestsRally.com

Facebook.com/Ojibweforestsrally

@Ojibweforestsrally



SCAN TO PURCHASE
TICKETS & CAMPING

2022 IS A *BIG YEAR* FOR THE OJIBWE FORESTS RALLY

The Ojibwe Forests Rally has been in Detroit Lakes for over a decade but never truly found a home. Many iconic locations have been used—the historic Pavilion by the lake, Detroit Mountain Recreation Area and the Holiday Inn on the Lake. Now, finally in 2022, after 11 years in Detroit Lakes, we have moved into a location we expect to be our headquarters. The Soo Pass Ranch, the home of WEFest, is now our home as well.

So, why have we kept moving around? The short answer is a Goldilocks one. None of these other locations were just right. Now at Soo Pass Ranch, we have all that we have been looking for and need in one location with room to grow in the future.

The Soo Pass Ranch has been the home of the WEFest country music festival for decades. The festival hosts tens of thousands of fans in early August on its expansive grounds. The Ojibwe Forests Rally will be able to benefit from this new partnership with Soo Pass in many ways.

In 2022, we have added camping to our available options. This allows competitors, volunteers and our fans to have a place to stay during the rally that is close to the action.

The new arrangement with Soo Pass is also allowing us to put much of the rally in the same location. Registration, vehicle inspection, volunteer meetings and banquet, podium celebration and our brand new final Super Stages will all be on the grounds. Soo Pass Ranch is what we have been working towards for many years.

In order to make this happen we started conversations in 2014 and picked them up in earnest last fall. Many pieces have had to fall into place at the correct time. The management and ownership of Soo Pass, Jon our Ojibwe Forests Rally Clerk of the Course, Scott with Rally Minnesota, and of course, O'Reilly Auto Parts of Detroit Lakes have all played essential roles in making this a reality.

So, this is our big news for the year. I hope everyone will enjoy our new home as much as we expect. As we do every year we plan big. The 2022 Ojibwe Forests Rally changes are significant, exciting and even a little frightening. I hope you'll come out and be a part of it with us.

- Erick Nelson, Chairman;
Ojibwe Forests Rally,
Rally Minnesota, LLC



SAVE THE DATE

AUGUST 25 & 26
2023



JOIN THE TEAM!

VOLUNTEERS RECEIVE

- Access to specific volunteer only stages
- Annual volunteer t-shirt
- Volunteer banquet
- Exclusive opportunities depending on position

***VOLUNTEER &
BE PART OF THE ACTION***

- > **COOPER TIRES** Stream Team
- > Spectator Control
- > Soo Pass Ranch
 - Set up, Ticketing, Spectators



EVENT HISTORY

PREVIOUS WINNERS

1986: John Buffum/Tom Grimshaw
1987: John Buffum/Tom Grimshaw
1995: Carl Merrill/John Bellefleur
1996: Henry Joy IV/Michael Fennell Jr.
1997: Paul Choiniere/Jeff Becker
1998: John Buffum/Doug E Shepherd
1999: Noel Lawler/Charles Bradley
2000: Paul Choiniere/Jeff Becker
2001: Mark Lovell/Steve Turvey
2002: Mark Higgins/Claire Mole
2003: David Higgins/Daniel Barritt
2004: Lauchlin O'Sullivan/Scott Putnam
2005: Stig Blomqvist/Ana Goni

2006: Travis Pastrana/Christian Edstrom
2007: Travis Pastrana/Christian Edstrom
2008: Travis Pastrana/Derek Ringer
2009: Travis Pastrana/Christian Edstrom
2012: Henry Krolikowski/Cynthia Krolokowski
2013: Ken Block/Alessandro Gelsomino
2014: David Higgins/Craig Drew
2015: David Higgins/Craig Drew
2016: David Higgins/Craig Drew
2017: Travis Pastrana/Robbie Durant
2018: David Higgins/Craig Drew
2019: David Higgins/Craig Drew
2020: Travis Pastrana/Rhianon Gelsomino
2021: Travis Pastrana/Rhianon Gelsomino

MOST OJIBWE FORESTS RALLY WINS:

Travis Pastana - 7
David Higgins - 6

MOST OJIBWE FORESTS RALLY PODIUMS:

Travis Pastrana - 10

LONGEST WINNING STREAK:

Travis Pastrana - 4 (2006-2009)

MOST MANUFACTURER WINS:

Subaru - 16



AUTOGRAPHS

– Sponsored by Subaru.net –



Scott Putnam's
subēnet
www.subaru.net

Supporting rally in
Minnesota since 1997

- BUY ONLINE -



THANK YOU



**Bloomington
Subaru**



The Ojibwe Forests Rally organizing committee thank those that have helped make this year possible and our volunteers!

subēnet
www.subaru.net



HOW RALLYING IS USED AS THERAPY FOR VETERANS

Tony Lacy Ensures His Fellow Veterans Stay in Good Health with His Unique Style of Therapy

WORDS BY MASON RUNKEL, Originally publish for DirtFish.com

When you think of therapy, what comes to mind? Quiet rooms? A sofa? Maybe online sessions now? Question and response? Well, what if instead of that, it was the loud roar of a flat-four, high-speed driving, and tactical approaches to competition?

Many people will refer to racing as their therapy. But for Tony Lacy and the Racing for Heroes (RFH) Charity organization it takes on the most literal form of the word. "We're a 501(c)3 charity focused on helping veterans," Lacy told DirtFish of the organization at New England Forest Rally. "We have a, for lack of better terms, chapter of the organization, and we focus on rally and drifting, and getting veterans into recreational therapy."

Recreational therapy, if you don't know, is a form of therapy that uses leisure and sporting activities as a means of easing and assisting individuals as they work toward better mental or physical health.

"We get veterans to events spectating, crewing, driving, hanging around, and just keep them out of trouble. "The hope is we bring them in, we help them through their recreational therapy and at the same time, we get them into a sport that is actually a lot of times cost prohibitive. "So we help cut some costs for them and get them in there, give them the networks, and then they can build their own rally cars and move off and be faster than me," Lacy joked.

So how did this charity-based, veteran-led rally team get it's start? Well it spawned back about fifteen years ago when Lacy himself was a member of Special Operations in the U.S. Armed Forces.

"So, in 2006, I was in a vehicle strike," Lacy explained. "So I took some injuries, and resulting from those injuries, I had pretty severe anxieties about some things: Small cars, tight, confined spaces. "So I retired from the Army, and these little anxieties I had were getting worse, and my wife actually told me, 'you need to find something to do.'

"I went from, jumping out of airplanes and all the cool stuff to just driving to work."

Lacy began helping people crew in the rally world, and eventually got with a few friends and started building their own car.

"We had a shop, and we started bringing more veterans in, and it grew from there. So, what it means to me is, that it's a coming along of just an idea of a bunch of dudes in a garage one night, to start building a rally car because it's something that we always wanted to do.

"And then we discovered how therapeutic it is for building, wrenching, being part of a tribe. Rally itself is a tribe of people and it doesn't matter which sanctioning body or whatever, you know, I think it's, of all the racing venues out there, rally has just offered so much.

"So it's a really good atmosphere environment to bring veterans into. Because everybody here is just here to rally and have fun and make friends."



Photography By Josh Sikora

Other conversations with veterans involved in US rallying have had a similar theme of rallying being a fitting sport for vets to enter. In addition to what Lacy mentioned, there's a very large structure in rallying that doesn't come with many other motorsports.

Reconnaissance before the race starts to scope out the stages and form a plan in the form of pace notes. Heavy reliance on your partner in the navigator seat to feed you the information they need if you're driving, and trust in your driver's abilities if you're navigating. The necessity to adapt at a moment's notice while you're in relatively remote parts of the country for any number of reasons.

All-in-all, it's more similar to what veterans had experienced in the field than many other forms of racing.

Lacy explained, "We call it a sweat equity organization. You come in, and we have skill levels from dudes that could build a car out of a cardboard box to guys, like me, that break the car every time I touch it with a wrench. We have mentors in there and the guys, no matter if they're doing dirt track, drag, rally, the different series and stuff, we pair them up with folks that help, that know about the series and they work on the cars and most often they start out crewing.

While it's always great to watch rally for the high-speed cars doing cool things out in the woods like most of us do, it's organizations like the RFH Rally Team that remind us there's always more we can be doing to help others, and make a lasting impact on the world while we carry out our racing passions.



READ THE FULL STORY AT
www.dirtfish.com/rally/ara/



FREE TESTING
*of alternators, batteries,
and starters.*



CHECK ENGINE
FREE check engine light testing.



WIPER BLADES
*FREE wiper blade installation.
Applies to most vehicles.*



FREE RECYCLING
*of oil, oil filters, gear oil,
transmission fluid, and batteries.*



WE LOAN TOOLS
*Borrow the specialty tool you
need to get the job done.*



OReillyAuto.com

ADV 1742

LUTHER BLOOMINGTON SUBARU // OJIBWE FORESTS RALLY // 19



2022 Subaru Outback Go Where Love Takes You



The 2022 Subaru Outback. The 2022 Outback is built to take you anywhere. It features the confidence of standard Symmetrical All-Wheel Drive with up to 33 MPG and the advanced safety of both standard EyeSight® Driver Assist Technology and the available DriverFocus® Distraction Mitigation System. And it's engineered to last, with 96% of Outback vehicles sold in the last 10 years still on the road today, more than Honda or Toyota brands.*

*Based on Experian Automotive vehicles in operation vs. total new registrations for MY2011-2020 as of December 2020.



Visit us at our new location!

500 American Boulevard West, Bloomington
www.bloomingtonsubaru.com | 763-392-9959