

OJIBWE FORESTS RALLY

21-23 AUGUST 2025



**SUPPLEMENTARY
REGULATIONS**

**2025 NATIONAL CHAMPIONSHIP &
CENTRAL REGION CHAMPIONSHIP**



2025 Ojibwe Forests Rally – Chairman’s Welcome

Welcome to the 2025 Ojibwe Forests Rally—where raw speed meets rugged terrain in the heart of Minnesota’s Northwoods.

This year, we’re proud to elevate the rally experience even further. Thursday night’s Rock, Roll, and Rally Superspecial at the legendary Soo Pass Ranch brings rally cars and rock music together for an unforgettable kickoff. With live entertainment, a double-header rally stage, and the elevated experience of the Prancing Pony bar, it’s a night designed for fans and teams to celebrate the spirit of competition in style.

The adventure continues through Minnesota’s signature twisting forest roads—technical, fast, and flowing—terrain that echoes the legendary stages of Rally Finland. It’s no coincidence: these roads and this community share that same rally DNA. Wide ditches, jumps, fast crests, and challenging corners await teams who dare to master them.

For the first time, the Ojibwe Forests Rally finishes in downtown Bemidji, where the podium celebration will be joined by music, community, and celebration by the shores of Lake Bemidji. This new finale is designed to honor the competitors and bring fans, families, and locals together in one big rally finish party.

The Ojibwe Forests Rally is more than a race—it’s a gathering of passionate individuals who share a love for motorsport and the outdoors. From volunteers and organizers to competitors and fans, this event is powered by dedication, camaraderie, and an enduring sense of adventure.

We’re grateful to each of you for being part of this journey. Good luck on the stages—and let’s make 2025 the most thrilling year yet.

Scott Putnam
Chairman

Jonathan Atkins
Clerk of the Course

SANCTIONED BY:



ORGANIZED AND PROMOTED BY:
RALLY MINNESOTA LLC



1. Introduction

- 1.1. The 2025 Ojibwe Forests Rally will take place over 3 days. The rally will consist of testing, recce, Parc Expose, Super Special, and forest stages.
- Thursday, August 21, 2025.
 - Friday, August 22, 2025.
 - Saturday, August 23, 2025.

The final details of the route, as well as time controls, regrouping points, and route controls are described on the time schedule contained in the Route Book. The Route Book and the final itinerary will be issued digitally prior to the event and in print at the event.

The Ojibwe Forests Rally has been part of rally in the United States for over 40 years. The 2025 event is the sixth rally in the national American Rally Association championship.

- 1.2. The Ojibwe Forests Rally will be held under the General Competition Rules, Rally Technical Rules, and Rally Competition Rules of the American Rally Association (ARA). The 2025 American Rally Association Rules and Regulations can be found at <https://www.americanrallyassociation.org/rulesandbulletins>

Modifications, amendments and/or changes to these Supplementary Regulations will be announced only by numbered and dated Bulletins posted to the online notice board.

- 1.3. The Ojibwe Forest Rally stages are gravel with a sandy base. They are tighter forest roads lined by trees and can be easily rutted with rain or multiple passes of rally cars.

- 1.4. **Overall SS Distance & Total Distances.**

NATIONAL TOTALS OF THE RALLY				
	SS	TRANSIT	TOTAL	%
Thursday (Section 1)	0.96	0.94	1.90	0.5%
FRIDAY (Sections 2, 3)	65.28	130.93	196.21	49.0%
SATURDAY (Sections 4, 5, 6)	75.52	126.92	202.44	50.5%
Total -- 20 SS	141.76	258.79	400.55	100%

REGIONAL TOTALS OF THE RALLY				
	SS	TRANSIT	TOTAL	%
Thursday (Section 1)	0.96	0.94	1.90	0.5%
FRIDAY (Sections 2, 3)	65.28	130.93	196.21	52.9%
SATURDAY (Sections 4, 5)	67.66	104.96	172.62	46.6%
Total -- 19 SS	133.90	236.83	370.73	100%

2. Organization and Description

2.1. Organized by the Ojibwe Forests Rally Committee and Rally Minnesota, LLC

2.2. Committee

Role	Name	Contact Phone	Email
Chairman	Scott Putnam	612-309-5938	scott@rallyminnesota.com
Clerk of the Course	Jonathan Atkins	701-367-9867	clerkofcourse@rallyminnesota.com
Asst. Clerk of the Course	Justin Pritchard	614-348-0394	justinpritchard550@gmail.com
Chief of EMS	Nate Koppenhaver	701-541-7348	nkoppenhaver@rrrdc.com
Chief of Controls	Eric Linner	612-382-5641	controls@rallyminnesota.com
	Tyler Linner	651-472-1541	controls@rallyminnesota.com
Chief of Scrutineering	Greg Lahlum	701-793-6919	greg.lahlum@gmail.com
Registrar	Nicky Schmidt	612-801-3332	registrar@rallyminnesota.com
Chief of Communications	Eli Koppenhaver	701-354-5181	eli.koppenhaver@gmail.com
Chief of Service	David Zemaitis	239-851-1900	dazemaitis@gmail.com

2.3. ARA Officials

Role	Name	Contact Phone	Email
ARA Steward	Alan Perry	206-499-5501	alanp@snowmoose.com
Event Steward	TBD		
Competition Director	Liam O'Donnell	908-333-7113	lee@usacnation.com
Series Registrar	Marni Nagy	949-436-2060	marni@ara-rally.com
Technical Director	Doug Nagy	949-637-7856	doug@ara-rally.com
Media Officer	Marni Nagy	949-436-2060	https://www.americanrallyassociation.org/media

2.4. Notice Board

The Official Notice Board is accessed with the **Sportity App** which available for both Apple and Android devices, or at <https://webapp.sportity.com/channel/OFR2025>. The password for this event is OFR2024. All official documents, Bulletins, start orders, provisional results, inquiries, RAR's, team updates, withdrawals, and responses will use the Sportity App.



Scan QR Code or
click here to
download the
Sportity App



Scan QR Code or
click here to
directly access
the notice board.

3. Schedule

Time (Central)	Description	Location
Monday, July 14, 2025		
	Supplemental Regulations Published	Sportity
Tuesday, July 15, 2025		
1200	Entry opens	http://enterrally.com/
Monday, July 28, 2025		
2359	Normal Entry Ends	http://enterrally.com/
Tuesday July 29, 2025		
00:00	Late Entry Opens	http://enterrally.com/
Wednesday, August 6, 2025 (Approximate)		
TBD	Advanced Competitor Packet sent	Sportity
Sunday, August 17, 2025		
2359	Competitor Entry Closes	http://enterrally.com/
Monday, August 18, 2025		
	Entry List & Provisional Start List	Sportity
1900	Novice Competitor Virtual Meeting	Online Teams Meeting
Wednesday, August 20, 2025		
0800-1600	Testing Stages	
1700-2100	Team Check-In	Soo Pass Ranch
1700-2000	Scrutineering	Soo Pass Ranch
1700-2000	Super Special Recce	Soo Pass Ranch
Thursday, August 21, 2025 Sunrise 0627 – Sunset 2013		
0600-0900	Team Check-In (By appointment only)	Soo Pass Ranch
0700-1700	Recce	Forest Stages
0900-1600	Scrutineering	Soo Pass Ranch
1730	Steward Meeting	Soo Pass Ranch
1815	Seeded Draw	TBD
1830	Start List Posted	Sportity
1830	Drivers Meeting	Soo Pass Ranch @ Parc Expose
1800-2200	Rally Kick-Off Party	Soo Pass Ranch
1800-2000	Parc expose	Soo Pass Ranch
1930-2100	Super Special	Soo Pass Ranch
Friday, August 22, 2025 Sunrise 0629 - Sunset 2012		
800	Service Opens	Pioneer Farm Service Area
0900-1100	Registration/Check-In (By Appt. Only)	Pioneer Farm Service Area
1300	First Car Out	Pioneer Farm Service Area
1652	Service 1	Pioneer Farm Service Area
2045	End of Day 1	Pioneer Farm Service Area

Saturday, August 23, 2025		Sunrise 0630 - Sunset 2010
730	Service Opens	Pioneer Farm Service Area
By Appt. Ony	Tech Inspection	Pioneer Farm Service Area
1000	First Car Out	Pioneer Farm Service Area
1308	Service 2	Pioneer Farm Service Area
1621	Service 3	Pioneer Farm Service Area
1745	Street Stage	Sanford Center Bemidji
1845	Final MTC	Sanford Center Bemidji
~1915	Regional Podium	Sanford Center Bemidji
~1945	National Podium	Sanford Center Bemidji

4. Entries

- 4.1. Entry and payment must be paid online at <http://enterrally.com/>. ARA will send an email blast to ARA license holders announcing the opening of online entries. Contact ara@ara-rally.com with issues with the online entry process.

Rally participants must have an ARA license (competitors, service crew, and media) available on the ARA website.

- 4.2. The first 5 paid National and 10 Regional teams competing in a Subaru vehicle are eligible for discounts. Discount codes are:
25OjibNAT
25OjibReg

4.3. Entry Fee Schedule

2025 Ojibwe Forests Rally	Regular Entry	Late Entry
	July 14 - July 28 @ 2359	July 29 – August 17 @ 2359
National	\$ 1,575	\$ 1,975
Regional	\$ 975	\$ 1,375
Extra Service Space	\$ 300	
RallySafe Rental Install Kit	\$ 40	

- 4.4. Entry fee includes recce participation, one service route book, single service spot and competitor route book. All competitors will receive printed and bound copies of all information necessary to complete the rally or follow the service route successfully. Printed materials can be picked up at event check in. All race documents will also be provided as a digital download once finalized.
- 4.5. Competitors needing to withdraw from the rally must complete the Entry Update/Withdrawal Form available on the Sportity App in the Registrar folder.
- 4.6. An entry may be withdrawn in accordance with GCR 4.9.
- Prior to 23:59 on 8/3/2025 – full refund
 - After 23:59 on 8/3/2025 and until 23:59 on 8/17/2025 – \$250 held by the event and remaining balance refunded
 - After 23:59 on 8/17/2025 – no refund.
 - If the event is cancelled a full refund will be issued.

5. Insurance

- 5.1. Third party liability insurance covering bodily injury and property damage, effective during the competition, will be provided by a policy secured by USAC and displayed on the Official Notice Board.
- 5.2. Competitors, service crew members and all event participants including officials, marshals, staff, stewards and all other volunteers who have obtained an ARA license, signed an ARA waiver and have been issued and are in possession of an event wristband confirming the signature of the waiver will be covered by a secondary USAC participant accident insurance policy which covers excess medical expenses to their primary medical insurance provider.

6. Fuel

- 6.1. VP Fuel will be available for pre-purchase and delivered to the event. Deadline to order VP Fuel is August 7, 2025. Details are available at the QR Code or link.
- 6.2. Pick up will be at the scrutineering location at Soo Pass Ranch. The Ojibwe Forests Rally and Rally Minnesota LLC is not responsible for fuel not picked up by the end of the day Thursday, August 21, 2025.



7. Reconnaissance (Recce)

- 7.1. Drivers and co-drivers must check in at the scheduled registration/check-in location prior to participating in recce.

7.2. Recce Details

- 7.2.1. Recce will be open. Competitors may make as many passes as the time and recce speed limit allows.
 - 7.2.1.1. Recce is open from 5pm to 8pm on Wednesday August 20, 2025 for the Super Special at Soo Pass Ranch.
 - 7.2.1.2. Recce is open from 7am until 5pm, Thursday, August 21, 2025 for recce on all stages.
- 7.2.2. Speed limit during recce is 30mph on stage roads. Otherwise use posted speed limit on transits. Speed limits will be enforced in accordance with ARA RCR 1.2.1.
- 7.2.3. Recce roads are open to the public. Teams must drive responsibly and stay on the proper side of the road.
- 7.2.4. Street vehicles must be used during recce. No lettering, advertising or livery can be on the vehicles. No prepared rally cars are allowed. The Clerk of the Course will be the final determinant of any violations.
- 7.2.5. As the Ojibwe Forests Rally has done for last few years an advance digital packet will be sent to all registered teams prior to the event, on or around 8/6/2025.
- 7.2.6. Competitors will be required to use the RSLite app during recce per bulletin 2025-4.

8. Registration/Check-in



Scan QR Code or
click here for check
in Location on
Google Maps.

8.1. Teams attending the event must check in during the times available in the event schedule. If all documents have been provided to ARA and there are no administrative issues, the team packet can be picked up by a single team representative.

- 8.2. Check-in will be at the Soo Pass Ranch. Waivers must be completed online as part of the licensing process. *The pin at the google link to the right is on the building used for check in.*

Soo Pass Ranch
25526 County Highway 22
Detroit Lakes, MN 56501

- 8.3. All participants (competitors and crew) must have completed the licensing by end of day 8/17/2025.



Scan QR Code or
click here for
Scrutineering
Location on Google
Maps.

9. Scrutineering

- 9.1. Scrutineering will be held at the Soo Pass Ranch. Scrutineering will be in the large white shed located in the concert bowl. The pin at the link to the right is located on the building where scrutineering will take place. Parking area for trailers will be sent out in a bulletin once finalized with Soo Pass Ranch.

- 9.2. Scrutineering times will be scheduled by the Competitor. Pay attention to the date and time you select, and try to keep Wednesday open for teams without crew. Use this link: <https://appt.link/OFR25TECH>

- 9.3. If you arrive late you may lose your spot in the schedule and will be slotted in at the next available time. Suggested to arrive at least half an hour prior to the scheduled time in case scrutineering is ahead of schedule.



Scan QR Code or
click here to
schedule
Scrutineering

- 9.4. Per ARA rules all decals and identification must be on the car prior to arriving at scrutineering. ARA door panels, windshield banners and number packages can be purchased online in advance.
- 9.5. Competition vehicles must be clean (washed) inside and out when presented for scrutineering. Vehicles not adequately clean will be refused inspection until they are clean.

10. Service

- 10.1.1. The 2025 Ojibwe Forests Rally will have one service location.
There is no service location at Soo Pass and the space available is for loading, unloading, and parking trailers.
- 10.1.2. Service Crew must be licensed and pre-registered to the team. Registration can be filled out on this form: <https://usacracing.redpodium.com/2025-ara-team-registration>
- 10.1.3. Service vehicles and teams are not allowed to stay at Soo Pass Ranch Thursday night.
- 10.1.4. Friday and Saturday Service
Pioneer Farms
16879 N Entrance Dr
Shevlin, MN 56676
- 10.1.5. Service spaces will be assigned by the Chief of Service. For any special needs regarding service and placement contact the Chief of Service.
- 10.2. Service will open:
- | <u>Friday</u> | <u>Saturday</u> |
|---------------|-----------------|
| 0800 | 0730 |
- 10.3. The standard Service space will be 20 ft. X 60 ft., with entrance only via one 20 ft. side. If you need more room, you must register for additional space(s) of 20 ft. X 60 ft as needed. There will be a \$300 charge for each additional space needed. You must be able to place your vehicle(s), trailer(s) and service equipment all within the space(s) assigned to you. There will be no space available to park your trailer away from your service area.
- 10.4. No alcohol use will be permitted in the service area. This includes everyone in the Service area, no matter what their connection to the rally - all teams, crews, guests, and volunteers.
- 10.5. Vehicles not officially registered with a team as a service vehicle will be not allowed in the service area. All officially registered vehicles must display registration cards with prominent car number on their dash at all times. Vehicles without cards will be considered spectator vehicles and not permitted into the service area for any reason. Limited parking will be available outside the service area.
- 10.6. Tarps/spill cloths must be placed under cars for all servicing operations. Service areas not cleaned will be subject to \$150 fine.
- 10.7. No on-ground grills, or disposing of any charcoal, briquettes, etc., are permitted. Any non-gas grill ignition sources must be completely COLD or removed in a fire-proof container.
- 10.8. **Service crews must notify the Chief of Service when they leave the service area to retrieve a car.** *If the Chief of Service cannot be located in a timely manner, the Clerk of the Course can be notified in the scoring trailer.*
- 10.9. Purchasing fuel from commercial gas stations located along transit sections of the route is permitted. All work involved in adding such fluids must be performed by the driver and/or co-driver if outside of the service area. No added allowance is included in transit times for such fueling.
- 10.10. Follow the direction of the Rally volunteer staff when parking your service vehicle at all service locations. Teams will have an assigned location based on running order and space requirements.



Scan QR Code or
click here for
Pioneer Farms
Service Location on
Google Maps.

- 10.11. Once service areas are set up, they can remain overnight. This includes service vehicles. Overnight camping Friday night to Saturday is permitted at Pioneer Farms for all teams.

11. Testing Stage

- 11.1. A testing stage will be provided on Wednesday, August 20 from 0800 – 1600.
- Testing will be available in two hour time blocks.
 - Each block will have a maximum of six (6) teams at \$300 each.
- 11.2. Registration and payment can be made at the ARA registration site when you sign up for the event.
- 11.3. Practice or testing on any public road in the Paul Bunyan, Two Inlets and White Earth State Forests is forbidden, without consent of the Clerk of the Course, 90 days prior and 30 days following the Ojibwe Forest Rally.
- Teams found in violation will be barred from starting or excluded from finishing the Ojibwe Forests Rally. Their entry fee will not be refunded. The Clerk of the Course will be the sole arbiter of any potential violation.
- 11.4. Any practice or testing on a private road or facility within the areas listed above during the dates stated in section 12.3 must be conducted with the written permission of the property owner. The Clerk of the Course must be given at least 48 hours advance notice of any such arrangements, including a copy of the permission and contact information for the property owner.
- 11.5. Private testing sessions can be arranged by contacting the Clerk of the Course.

12. Features of the Rally

The 2025 Ojibwe Forests Rally isn't just about world-class competition—it's a full-blown rally *festival*, blending the adrenaline of motorsport with the energy of live music and community celebration. This year, we've turned up the volume at both the start and the finish. Here's what to expect:

12.1. **Parc Exposé – Rock, Roll, and Rally** **Thursday | 1800–1930 | Soo Pass Ranch**

Welcome to the rally kickoff party—Parc Exposé at Soo Pass Ranch, where fans and competitors gather in front of the main concert area for the first taste of rally action. It's the perfect photo op and chance to connect with fans before the cars launch into battle.

- 12.1.1. Cars need to be at Parc Expose by 1800
- 12.1.2. Driver and Co-Driver need to be at Parc Expose by 1830.
- 12.1.3. RCR 4.10 will apply to the Parc Expose.

12.2. **Soo Pass Ranch Super Special – Double the Dirt** **Thursday Night | First car at 1930**

This isn't your average rally start. The Soo Pass Super Special delivers a one-two punch with two competitive runs on a fan-friendly loop course—run in reverse order.

- 12.2.1. Super Special begins immediately following Parc Exposé.
- 12.2.2. After Run 1, competitors return to the Parc Exposé zone before re-staging for Run 2.
- 12.2.3. After completing both runs, teams are released to service or rest.

Expect packed grandstands, cheering fans, food trucks, rally lights cutting through the night—and a live band ready to keep the vibe going long after the engines cool down.

12.3. **Bemidji Street Stage – Rally Finishes Loud** **Saturday Evening | Downtown Bemidji**

For the first time ever, the Ojibwe Forests Rally finishes in downtown Bemidji—with a dramatic street stage just steps from the Lake Bemidji waterfront and an evening of community celebration.

- 12.3.1. A Street Stage will be held on Saturday evening in the heart of Bemidji.
- 12.3.2. Cars are to remain in Parc Ferme until directed to proceed.
- 12.3.3. After the stage, competitors will go directly to post-event impound.

The finish line blends fast cars, local flavor, music, and an electric crowd. Podiums, interviews, and end-of-event celebrations follow—let's close out Ojibwe 2025 with a bang.

A special group rate has been set up for the 2025 Ojibwe Forests Rally Simply click the link below for fast and easy online booking. \$159.00 + Tax Per Night.

Dates Available August 19-24, 2025 Link: <https://www.choicehotels.com/reservations/groups/QH33C9>
Group Name: **OJIBWE 2025**

12.4. **Start of the Rally**

- 12.4.1. Thursday competition will begin at Soo Pass Ranch in Detroit Lakes.
- 12.4.2. Friday and Saturday competition will start from the service location at Pioneer Farms.
- 12.4.3. The official start order will be posted on Sportity.

12.5. **Running of the Rally**

- 12.5.1. All control operations will be conducted per section 4 of the current ARA Rally Competition Rules and employ RallySafe consoles and tablets. Informational and provisional results will be posted on Sportity.
- 12.5.2. Official time is Central Daylight Time (UTC -5) as verified by RallySafe.
- 12.5.3. The running of Otterkill 3 (SS19) will be the Power Stage.
- 12.5.4. The power stage will be run with an additional minute added to the start interval for all National Competitors.
- 12.5.5. For National early check in is allowed for control TC2A of Leg One, TC10A of Leg Two, and TC20A of Leg Three.
- 12.5.6. For Regional early check in is allowed for control TC2A of Leg One, TC10A of Leg Two, and TC20A of Leg Three.

12.6. **Rejoining the event after retirement (ARA RCR 6.3)**

- 12.6.1. 13.4.1. Competitors who have missed one or more controls and are Restarting After Retirement or wish to rejoin as a Non-Competitive Entry, are required to complete and submit an inquiry on Sportity before they restart. The Clerk of the Course and Chief Scrutineer will verify that the team meets the safety requirements and has any required tracking or monitoring equipment before issuing a timecard for the Rally Re-Entry.

12.7. **Finish of the Rally**

- 12.7.1. Final Checks and Impound will be at the Sanford Center in Bemidji.
- 12.7.2. Final Results will be posted on the Sportity Online Notice Board.
- 12.7.3. The official finish will be at the Sanford Center in Bemidji.
- 12.7.4. Regional rallies awards points to Overall, Limited 4WD, NA4WD, Open 2WD and Limited 2WD. The Ojibwe Forests Rally Officials will award trophies in all classes with more than two finishers.

- 12.8. Soo Pass Ranch will be used for many activities Wednesday and Thursday of event week. Please follow signage, volunteers and directions.

13. **Sanction Exemptions**

- 13.1. Reverse order for the Soo Pass Super Special Stages.
- 13.2. Reverse order for the Bemidji Street Stage.

Appendix 1: National Schedule

2025 Ojibwe Forests Rally, Thursday

Competition Itinerary

50 cars

START Leg 1

Thursday, August 21, 2025

TC	LOCATION	SS DIST	TRANSIT DIST	TOTAL DIST	LATENESS TIME	TRANSIT TIME	FIRST CAR DUE
0	MTC 1 Soo Pass Ranch						19:00
	Distance to next refuel	(0.96)	(0.99)	(1.95)			
1	Transit to SS #1		0.05	0.05		0:02	19:02
SS #1	Soo Pass	0.48			0:01		19:05
	Transit to Parc Ferme		0.72	1.20		0:06	19:12
1A	Soo Pass Parc Ferme					0:50	20:02
2	Transit to SS #2		0.05	0.05		0:02	20:04
SS #2	Soo Pass 2	0.48			0:01		20:07
	Transit to MTC		0.17	0.65		0:06	20:14
2A	MTC 2 Soo Pass Ranch						20:14
Leg 1 Totals		0.96	0.99	1.95			

Section 1

Section 1

2025 Ojibwe Forests Rally, Friday

Competition Itinerary

50 cars

START Leg 2				Friday, August 22, 2025			
TC	LOCATION	SS DIST	TRANSIT DIST	TOTAL DIST	LATENESS TIME	TRANSIT TIME	FIRST CAR DUE
2B	MTC 3 Pioneer Farm						13:00
	Distance to next refuel	(32.64)	(65.47)	(98.11)			
3	Transit to SS #3		25.81	25.81		0:39	13:39
SS #3	Refuge	5.93			0:07		13:42
4	Transit to SS #4		5.82	11.75		0:13	14:02
SS #4	Crossroads	10.11			0:16		14:05
5	Transit to SS #5		3.41	13.52		0:10	14:31
SS #5	Steamboat	12.28			0:19		14:34
6	Transit to SS #6		3.61	15.89		0:13	15:06
SS #6	Spur 1	4.32			0:06		15:09
	Transit to Itasca Service		26.82	31.14		0:37	15:52
6A	RGC 1 In						15:52
6B	RGC 1 Out					0:15	16:07
6C	Service Pioneer Farm					0:45	16:52
RZ 1	Service Refuel (time added to next transit)					0:05	
	Distance to next refuel	(32.64)	(65.47)	(98.11)			
7	Transit to SS #7		25.81	25.81		0:39	17:36
SS #7	Refuge 2	5.93			0:07		17:39
8	Transit to SS #8		5.82	11.75		0:13	17:59
SS #8	Crossroads 2	10.11			0:16		18:02
9	Transit to SS #9		3.41	13.52		0:10	18:28
SS #9	Steamboat 2	12.28			0:19		18:31
10	Transit to SS #10		3.61	15.89		0:13	19:03
SS #10	Spur 1 2	4.32			0:06		19:06
	Transit to Pioneer Farm		26.82	31.14		0:37	19:49
10A	MTC 4 Pioneer Farm						19:49
Leg 2 Totals		65.28	130.94	196.22			
Leg 1 - 2 Totals		66.24	131.93	198.17			

Section 2

Section 3

2025 Ojibwe Forests Rally, Saturday

National Competition Itinerary

50 cars

START Leg 3							Saturday, August 23, 2025
TC	LOCATION	SS DIST	TRANSIT DIST	TOTAL DIST	LATENESS TIME	TRANSIT TIME	FIRST CAR DUE
10B	MTC 5						10:00
	Distance to next refuel	(33.52)	(35.73)	(69.25)			
11	Transit to SS #11		11.36	11.36		0:19	10:19
SS #11	Otterkill	7.86			0:13		10:22
12	Transit to SS #12		7.44	15.30		0:23	10:58
SS #12	Kanten Trail	8.31			0:12		11:01
13	Transit to SS #13		0.51	8.82		0:07	11:20
SS #13	Height o' Land	8.30			0:12		11:23
14	Transit to SS #14		12.69	20.99		0:23	11:58
SS #14	Anchor Mattson	9.05			0:11		12:01
	Transit to Pioneer Farm		3.73	12.78		0:11	12:23
14A	RGC 2 Pioneer Farm In						12:23
14B	RGC 2 Pioneer Farm Out					0:15	12:38
14C	Service Pioneer Farm					0:30	13:08
RZ 2	Service Refuel (time added to next transit)					0:05	
	Distance to next refuel	(33.52)	(35.73)	(69.25)			
15	Transit to SS #15		11.36	11.36		0:19	13:32
SS #15	Otterkill 2	7.86			0:13		13:35
16	Transit to SS #16		7.44	15.30		0:23	14:11
SS #16	Kanten Trail 2	8.31			0:12		14:14
17	Transit to SS #17		0.51	8.82		0:07	14:33
SS #17	Height o' Land 2	8.30			0:12		14:36
18	Transit to SS #18		12.69	20.99		0:23	15:11
SS #18	Anchor Mattson 2	9.05			0:11		15:14
	Transit to Pioneer Farm		3.73	12.78		0:11	15:36
18A	RGC 3 Pioneer Farm In						15:36
18B	RGC 3 Pioneer Farm Out					0:15	15:51
18C	Service 2 Pioneer Farm					0:30	16:21
RZ 3	Service Refuel (time added to next transit)					0:05	
	Distance to next refuel	(8.48)	(55.46)	(63.94)			
19	Transit to SS #19		11.36	11.36		0:19	16:45
SS #19	Otterkill 3	7.86			0:13		16:48
	Transit to Sanford Center		43.76	51.62		1:00	18:01
19A	RGC 4 Sanford Center In						18:01
19B	RGC 4 Sanford Center Out					0:30	18:31
20	Transit to SS #20		0.23	0.23		0:02	18:33
SS #20	Sanford Center	0.62			0:02		18:36
	Transit to MTC		0.11	0.73		0:06	18:44
20A	MTC 6 Sanford Center						18:44
Leg 3 Totals		75.52	126.92	202.44			
Leg 1 - 3 Totals		141.76	258.85	400.61			

Appendix 2: Regional Schedule 2025 Ojibwe Forests Rally, Thursday

Competition Itinerary

50 cars

START Leg 1

Thursday, August 21, 2025

TC	LOCATION	SS DIST	TRANSIT DIST	TOTAL DIST	LATENESS TIME	TRANSIT TIME	FIRST CAR DUE
0	MTC 1 Soo Pass Ranch						19:00
	Distance to next refuel	(0.96)	(0.99)	(1.95)			
1	Transit to SS #1		0.05	0.05		0:02	19:02
SS #1	Soo Pass	0.48			0:01		19:05
	Transit to Parc Ferme		0.72	1.20		0:06	19:12
1A	Soo Pass Parc Ferme					0:50	20:02
2	Transit to SS #2		0.05	0.05		0:02	20:04
SS #2	Soo Pass 2	0.48			0:01		20:07
	Transit to MTC		0.17	0.65		0:06	20:14
2A	MTC 2 Soo Pass Ranch						20:14
Leg 1 Totals		0.96	0.99	1.95			

Section 1

2025 Ojibwe Forests Rally, Friday

Competition Itinerary

50 cars

START Leg 2

Friday, August 22, 2025

TC	LOCATION	SS DIST	TRANSIT DIST	TOTAL DIST	LATENESS TIME	TRANSIT TIME	FIRST CAR DUE
2B	MTC 3 Pioneer Farm						13:00
	Distance to next refuel	(32.64)	(65.47)	(98.11)			
3	Transit to SS #3		25.81	25.81		0:39	13:39
SS #3	Refuge	5.93			0:07		13:42
4	Transit to SS #4		5.82	11.75		0:13	14:02
SS #4	Crossroads	10.11			0:16		14:05
5	Transit to SS #5		3.41	13.52		0:10	14:31
SS #5	Steamboat	12.28			0:19		14:34
6	Transit to SS #6		3.61	15.89		0:13	15:06
SS #6	Spur 1	4.32			0:06		15:09
	Transit to Itasca Service		26.82	31.14		0:37	15:52
6A	RGC 1 In						15:52
6B	RGC 1 Out					0:15	16:07
6C	Service Pioneer Farm					0:45	16:52
RZ 1	Service Refuel (time added to next transit)					0:05	
	Distance to next refuel	(32.64)	(65.47)	(98.11)			
7	Transit to SS #7		25.81	25.81		0:39	17:36
SS #7	Refuge 2	5.93			0:07		17:39
8	Transit to SS #8		5.82	11.75		0:13	17:59
SS #8	Crossroads 2	10.11			0:16		18:02
9	Transit to SS #9		3.41	13.52		0:10	18:28
SS #9	Steamboat 2	12.28			0:19		18:31
10	Transit to SS #10		3.61	15.89		0:13	19:03
SS #10	Spur 1 2	4.32			0:06		19:06
	Transit to Pioneer Farm		26.82	31.14		0:37	19:49
10A	MTC 4 Pioneer Farm						19:49

Leg 2 Totals

65.28130.94196.22

Leg 1 - 2 Totals

66.24131.93198.17

2025 Ojibwe Forests Rally, Saturday

Regional Competition Itinerary

50 cars

START Leg 3				Saturday, August 23, 2025			
TC	LOCATION	SS DIST	TRANSIT DIST	TOTAL DIST	LATENESS TIME	TRANSIT TIME	FIRST CAR DUE
10B	MTC 5						10:00
	Distance to next refuel	(33.52)	(35.73)	(69.25)			
11	Transit to SS #11		11.36	11.36		0:19	10:19
SS #11	Otterkill	7.86			0:13		10:22
12	Transit to SS #12		7.44	15.30		0:23	10:58
SS #12	Kanten Trail	8.31			0:12		11:01
13	Transit to SS #13		0.51	8.82		0:07	11:20
SS #13	Height o' Land	8.30			0:12		11:23
14	Transit to SS #14		12.69	20.99		0:23	11:58
SS #14	Anchor Mattson	9.05			0:11		12:01
	Transit to Pioneer Farm		3.73	12.78		0:11	12:23
14A	RGC 2 Pioneer Farm In						12:23
14B	RGC 2 Pioneer Farm Out					0:15	12:38
14C	Service Pioneer Farm					0:30	13:08
RZ 2	Service Refuel (time added to next transit)					0:05	
	Distance to next refuel	(33.52)	(35.73)	(69.25)			
15	Transit to SS #15		11.36	11.36		0:19	13:32
SS #15	Otterkill 2	7.86			0:13		13:35
16	Transit to SS #16		7.44	15.30		0:23	14:11
SS #16	Kanten Trail 2	8.31			0:12		14:14
17	Transit to SS #17		0.51	8.82		0:07	14:33
SS #17	Height o' Land 2	8.30			0:12		14:36
18	Transit to SS #18		12.69	20.99		0:23	15:11
SS #18	Anchor Mattson 2	9.05			0:11		15:14
	Transit to Pioneer Farm		3.73	12.78		0:11	15:36
18A	RGC 3 Pioneer Farm In						15:36
18B	RGC 3 Pioneer Farm Out					0:15	15:51
18C	Service 2 Pioneer Farm					0:30	16:21
RZ 3	Service Refuel (time added to next transit)					0:05	
	Distance to next refuel	(0.62)	(33.50)	(34.12)			
	Transit to Sanford Center		33.16	33.16		0:47	17:13
19A	RGC 4 Sanford Center In						17:13
19B	RGC 4 Sanford Center Out					0:30	17:43
20	Transit to SS #20		0.23	0.23		0:02	17:45
SS #20	Sanford Center	0.62			0:02		17:48
	Transit to MTC		0.11	0.73		0:06	17:56
20A	MTC 6 Sanford Center						17:56
Leg 3 Totals		67.66	104.96	172.62			
Leg 1 - 3 Totals		133.90	236.89	370.79			

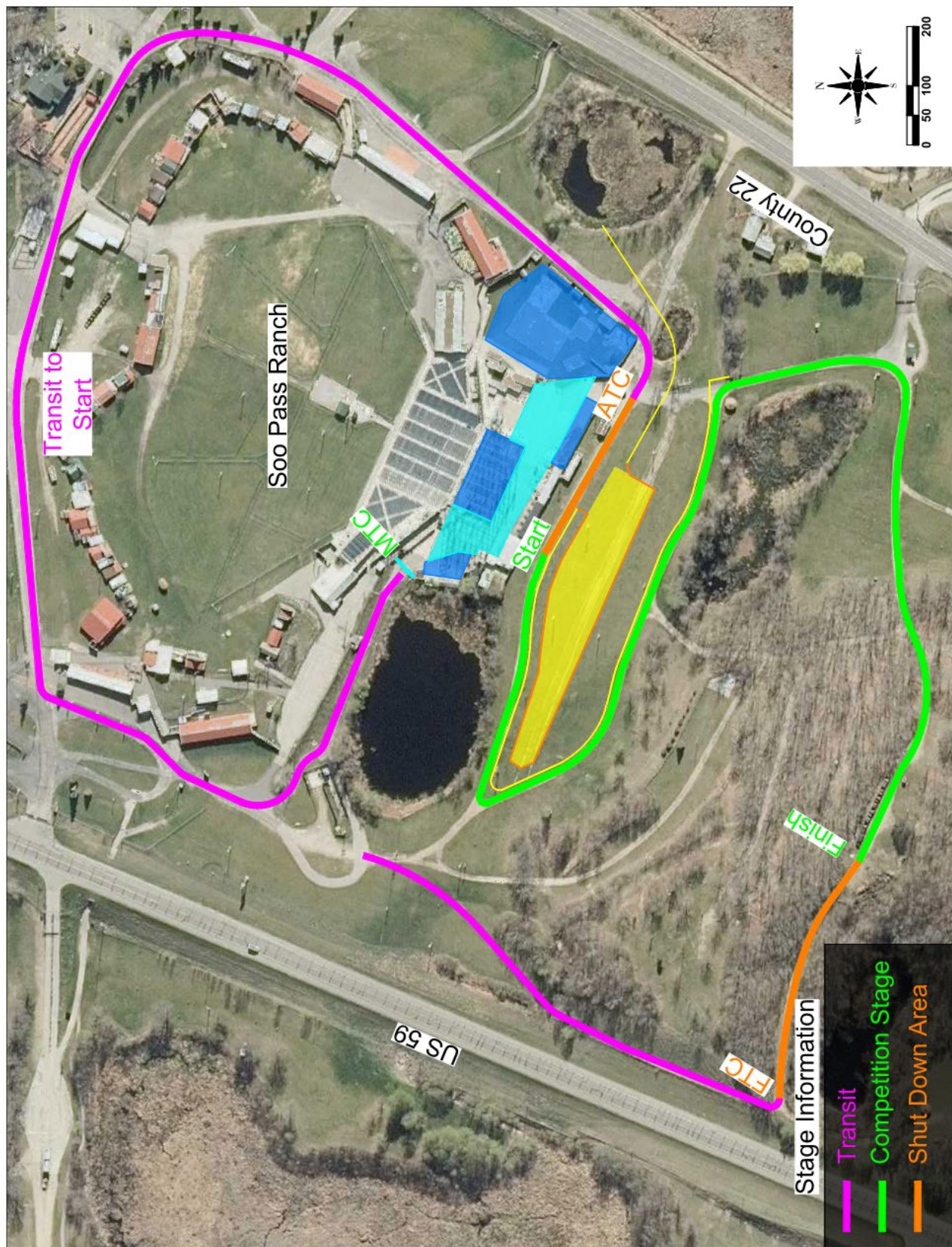
Section 4

Section 5

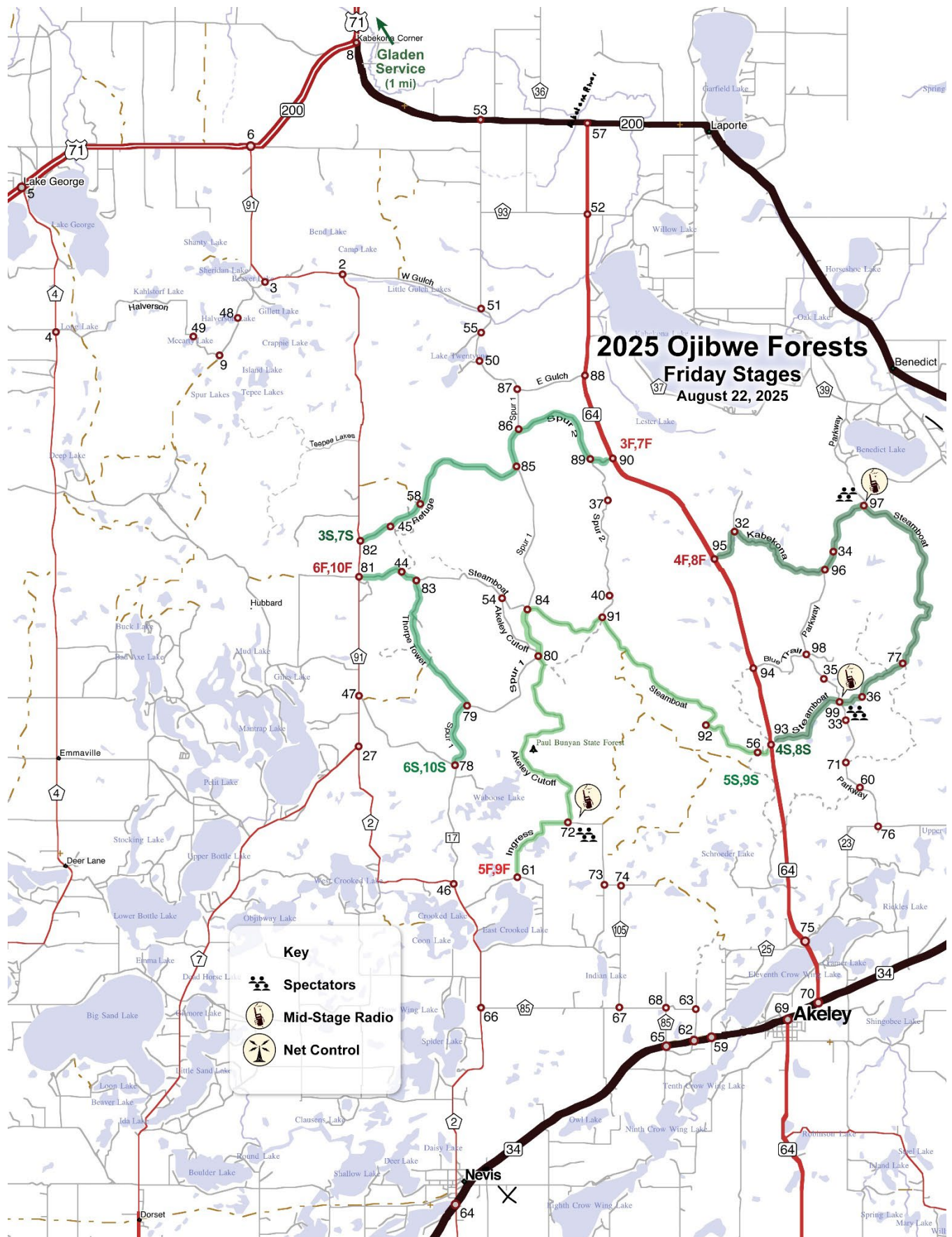
Section 6

Section 7

Appendix 3: Maps
Thursday Night Super Special, SS1 & SS2

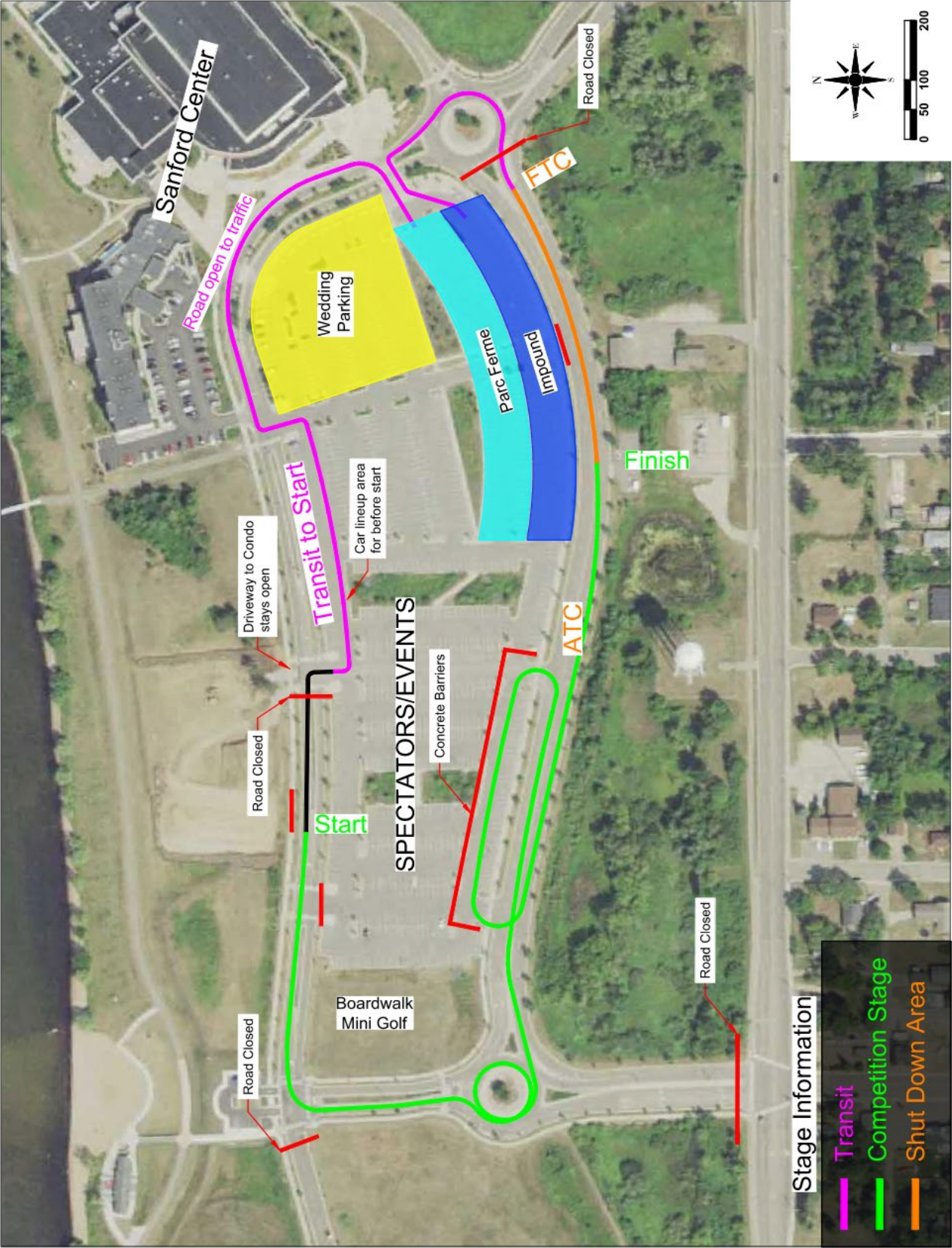


Friday Stages



[illegible]

Saturday Night Super Special, SS20





Greetings from Bemidji, MN

A special group rate has been set up for the
2025 Ojibwe Forests Rally

Simply click the link below for fast and easy
online booking or call us today to get your stay
booked!

Dates Available August 19-24, 2025

<https://www.choicehotels.com/reservations/groups/QH33C9>



SPECIAL RATE AND BLOCK EXPIRES ON 8/1/2025



Room Types

Available:

King Suite
w/Sofa

Single King

Double Queen

\$159.00 + Tax
Per Night

Group Name:

OJIBWE 2025

Country Inn & Suites
by Radisson
927 Lake Shore
Drive NE
Bemidji, Mn 56601
For Direct Hotel
Reservations:
(218)441-4800