

AUGUST 21-23, 2025

# SPECTATOR GUIDE



The Ojibwe Forests Rally is a driver's dream—featuring fast, flowing stages, adrenaline-pumping sand straights, and technical corners set against Minnesota's breathtaking Northwoods backdrop. It's a perfect blend of speed, skill, and rally racing excitement.



[www.ojibweforests rally.com](http://www.ojibweforests rally.com)





# CONTENTS

- › Thursday Soo Pass
- › Friday Spectator Locations
- › Saturday Spectator Locations
- › Saturday Sanford Center
- › Safety
- › History



**subēnet**  
[www.subaru.net](http://www.subaru.net)



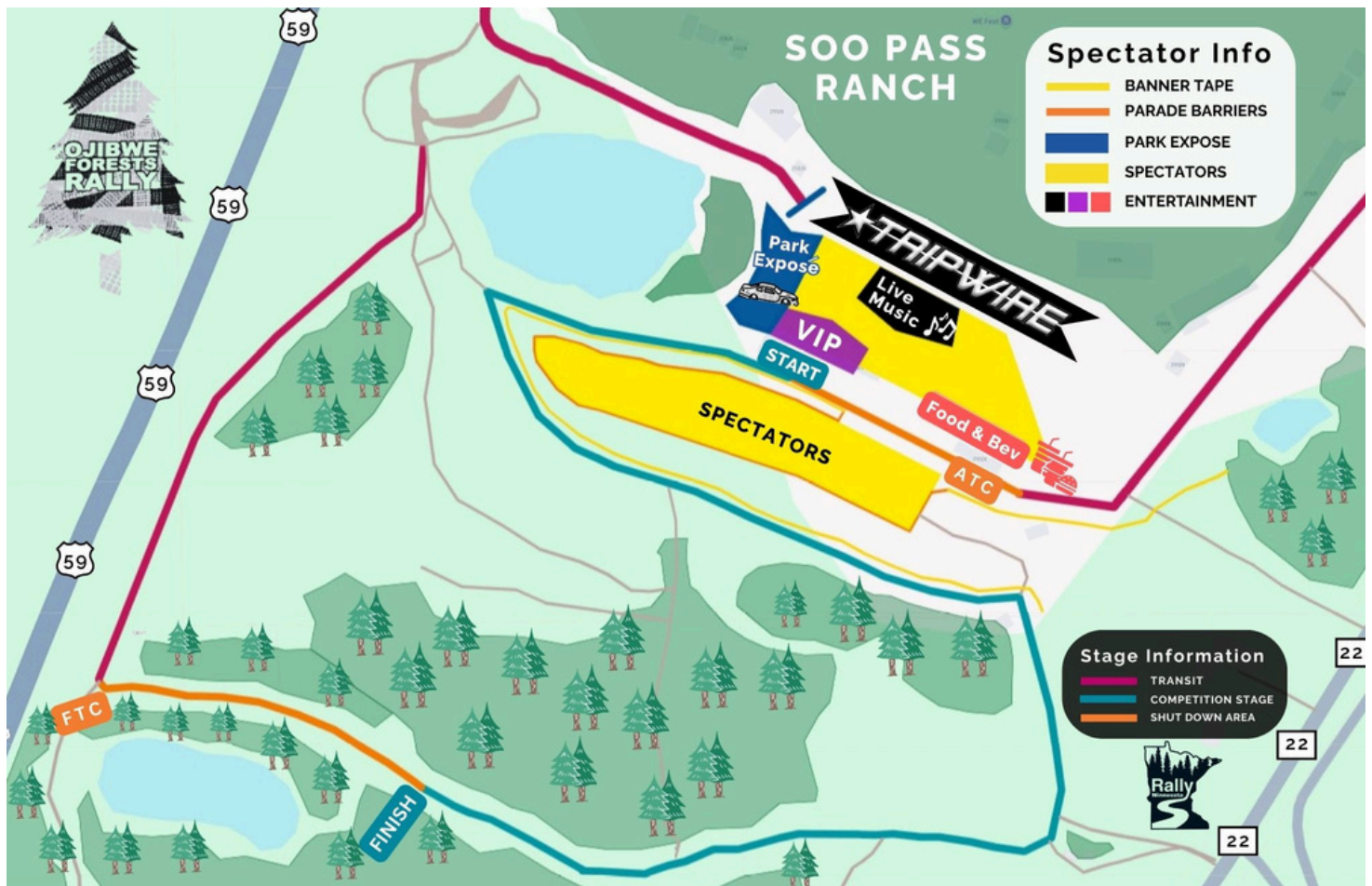
**Bloomington  
Subaru**



[www.ojibweforestrally.com](http://www.ojibweforestrally.com)



# THURSDAY @ SOO PASS



# ROCK, ROLL & RALLY

LIVE WITH

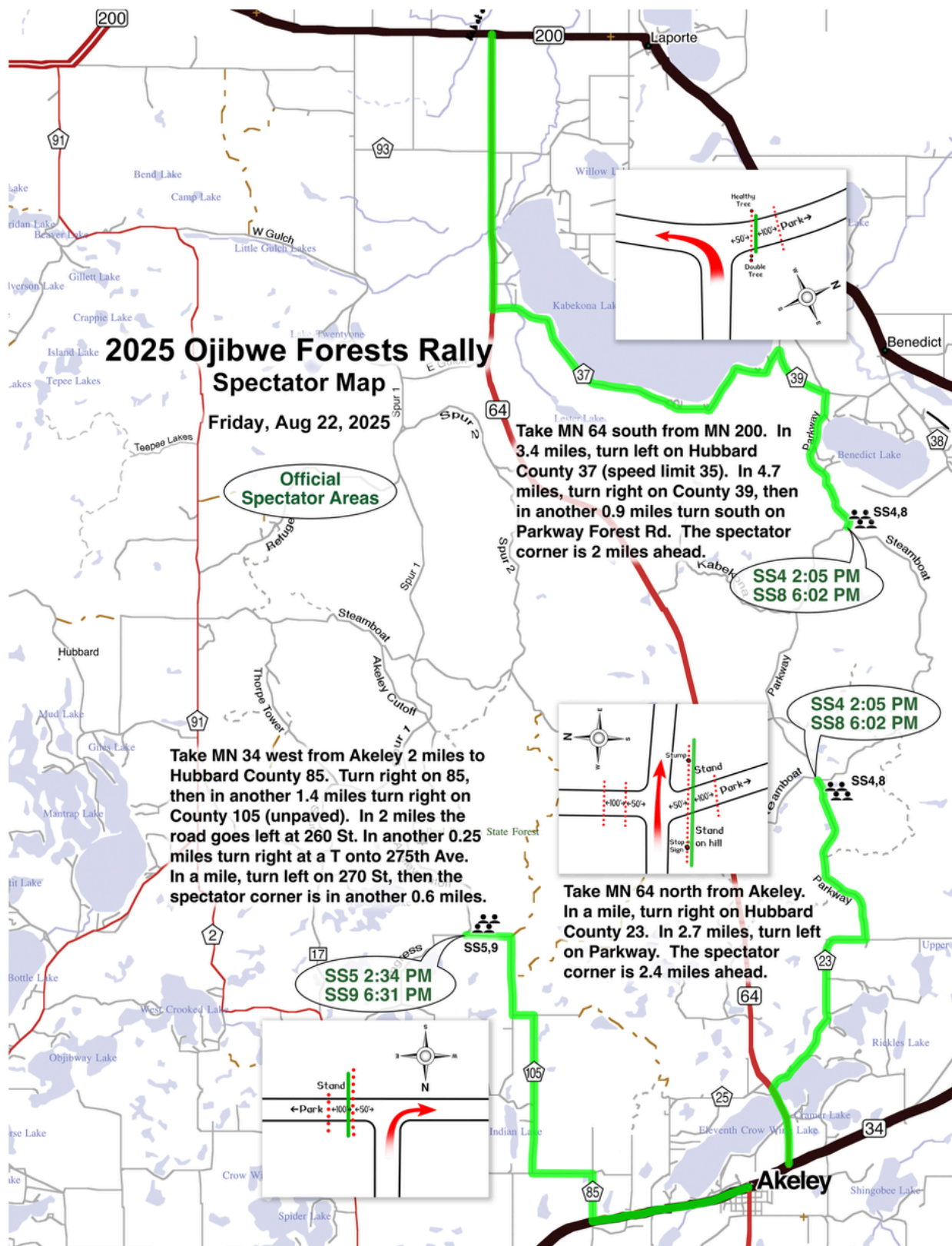
## ★TRIPWIRE

8/21/25

@ SOO PASS



# FRIDAY SPECTATOR STAGES







**\$0** DOWN **2.99%** A.P.R. FOR UP TO 36 MONTHS\*

AND

SAVE UP TO **\$500** ON SELECT EQUIPMENT\*

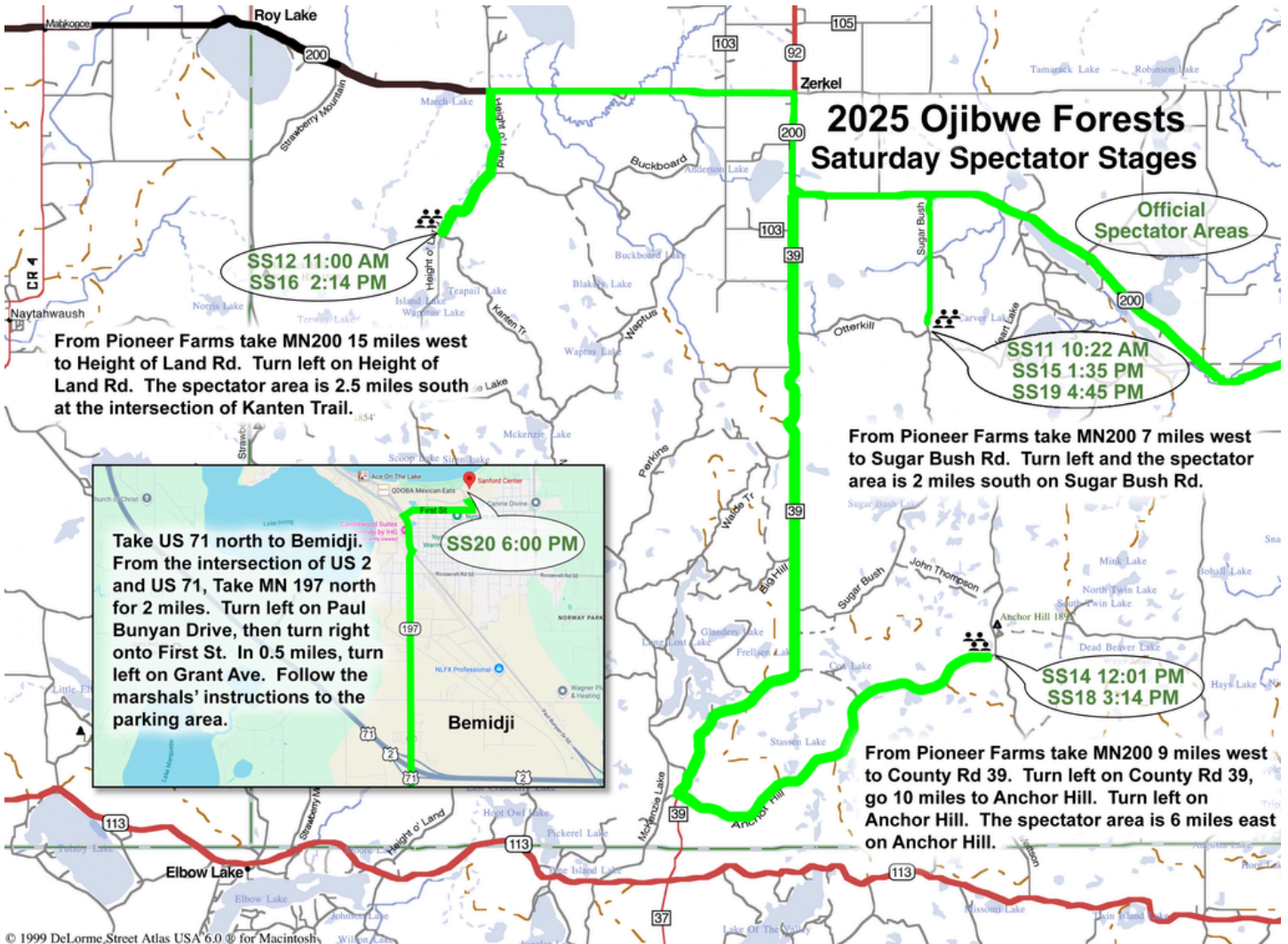
Learn more at [ARAKubotaDiscount.com](http://ARAKubotaDiscount.com)

© Kubota Tractor Corporation, 2021. \$0 Down, 2.99% A.P.R. financing for up to 36 months. Customer instant rebates of \$500 are available on purchases of new Kubota RTV5000 series equipment from participating dealers\* in stock inventory. Promotional rate available to qualified purchasers through Kubota Credit Corporation, U.S.A., subject to credit approval. Example: all monthly payments of \$22.13 per \$1,000 financed. \$500 rebate is not available with 0% A.P.R. or other promotional financing. Offer expires 5/31/21. Terms subject to change. For complete warranty, disclaimer, safety, incentive offer and product information, consult your Dealer or [KubotaUSA.com](http://KubotaUSA.com). Your Kubota Limited warranty gives you specific legal rights. You may have other rights which vary from state to state. 2 years limited warranty or 1000 hours (whichever occurs first). Kubota Tractor Corporation does not authorize any person to create for KTC any obligation or liability other than that stated in the limited warranty.

[www.ojibweforestsrally.com](http://www.ojibweforestsrally.com)



# SATURDAY SPECTATOR STAGES



## RALLY SUPERSTORE



[www.rallyamericastore.com](http://www.rallyamericastore.com)



## SHOP @ THE RALLY

On site @ Soo Pass  
& the Sanford Center

Show your support & grab official event merch! When you purchase on this site it supports rally teams at the event and in the U.S.



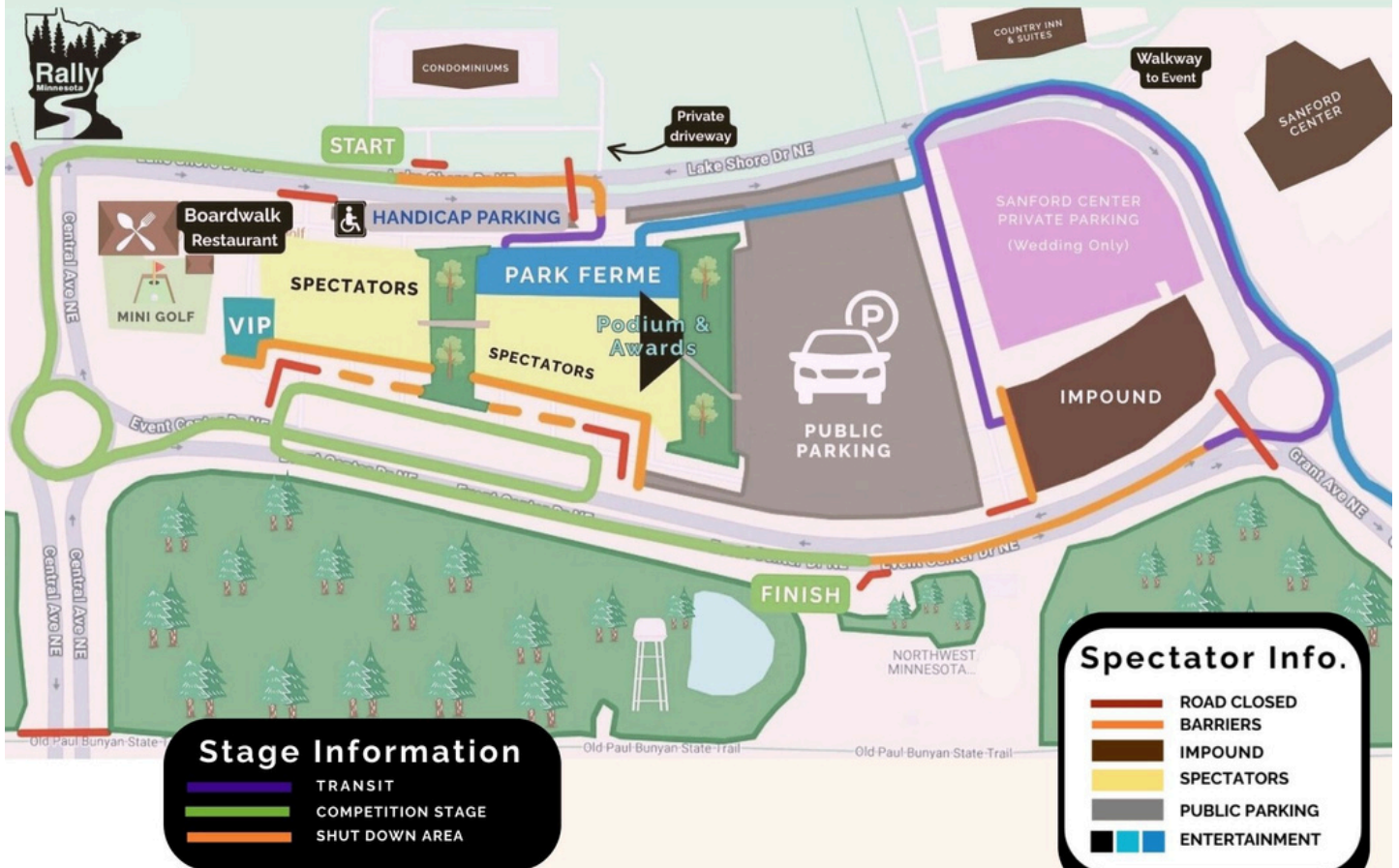
[www.ojibweforestsrally.com](http://www.ojibweforestsrally.com)



# SATURDAY @ SANFORD CENTER

Saturday, Aug. 23 - Starts @ 6 PM

Sanford Center, Bemidji





# LEAVE NO TRACE

## Leave No Trace Principles for the Ojibwe Forests Rally

The Ojibwe Forests Rally takes place in a treasured natural and cultural setting. To preserve its beauty, honor the heritage of the land, and ensure safety for all, please follow these principles:

### Respect the Forests and Land

- Treat the forests, trails, and waterways with care. Avoid damaging vegetation, disturbing wildlife, or altering the natural environment.

### Plan Ahead and Prepare

- Download maps and event schedules to your phone to reduce paper waste. Know the rally routes and designated spectator areas.
- Pack Out All Trash
- Bring a bag with you, carry your trash home, or place it in a provided trash can. Leave every area cleaner than you found it.

### Respect Tribal Land

- The Ojibwe Forests include areas of cultural and spiritual significance to Indigenous peoples. Follow posted guidelines, stay on designated routes, and avoid restricted areas.
- Stay on Designated Trails and Roads
- Use only marked paths and roads to minimize impact on the environment and cultural sites.

### Minimize Campfire Impact

- Only build a fire if it is permitted and safe to do so. Keep fires small, use established fire rings, and fully extinguish them with water.

### Pets

- Keep pets leashed and under control at all times. For their safety and comfort, we advise leaving pets at home.

By following these principles, you help protect the environment, respect cultural heritage, and keep the Ojibwe Forests Rally safe and enjoyable for everyone.





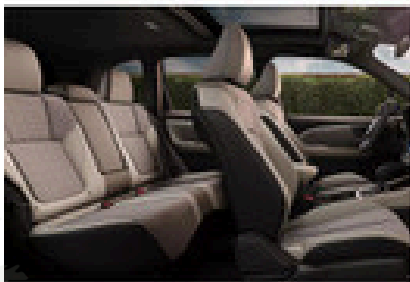


## 2025 Subaru Forester Hybrid **Ready for Adventure**



The 2025 Subaru Forester Hybrid. The Forester is always ready for your next adventure, whether you're going into the backwoods or just downtown. Every Forester features the all-weather, all-road confidence of standard Symmetrical All-Wheel Drive. The Forester will be with you on all the journeys ahead — 96% of Forester SUVs sold in the last 10 years are still on the road today. That's more than the Toyota RAV4, Honda CR-V, Mazda CX-5, Nissan Rogue, or Ford Escape.\*

\*Based on Experian Automotive vehicles in operation vs. total new registrations for MY2015-2024 as of December 2024.



Visit us at our new location!

500 American Boulevard West, Bloomington  
[www.bloomingtonsubaru.com](http://www.bloomingtonsubaru.com) | 763-392-9959

[www.ojibweforestrally.com](http://www.ojibweforestrally.com)

# SPECTATOR

## SAFETY

### Study the Diagrams:

All **RED AREAS** are 'NO-GO'.

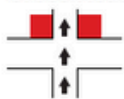
These areas are extremely dangerous.

**DANGER**

"T" Junction



Cross Road



"Y" Junction



"Y" Junction



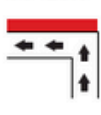
Left Bend



Right Bend



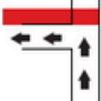
90° Left



90° Right



90° Left Road  
At Side



90° Right Road  
At Side



Always be alert  
and **NEVER** stand  
in the red areas.

Rally cars are spectacular and exciting, but can do the unexpected. **For your safety and the safety of everyone** involved with the Ojibwe Forests Rally please:

- Listen to the marshals.
- Follow any instructions from rally officials.
- Know that signage, barricades and banner tape are in place for your protection. Do not move them.
- Be aware of your surroundings and use them as cover from the unexpected and debris.
- Never walk on an active rally stage.
- Know that not every rally car will be the same. Use common sense regarding where you are watching.
- Speak up. If you are uncomfortable with something you see tell the rally volunteers.



Thank you to our incredible spectators for joining us and being part of the Ojibwe Forests Rally experience!

We are grateful to the City of Bemidji, Detroit Lakes, the Band of Ojibwe, our dedicated volunteers, and the competitors who brought the excitement of rally racing to Northern Minnesota.



# History & Legacy of the Ojibwe Forests Rally

**“The original rallies were less about speed, and more about timing, control, and teamwork.”**

Founded in 1980 in Minnesota, the Ojibwe Forests Rally began as a grassroots effort by local rally enthusiasts, led by Bob Nielsen, a retired schoolteacher and passionate rallyist. The rally's early years were deeply community-driven, organized by members of the Land O' Lakes Region of the Sports Car Club of America (SCCA).

## From TSD to Stage Rally

- Originally formatted as a Time-Speed-Distance (TSD) event, competitors in everyday street cars navigated open public roads, attempting to arrive at checkpoints exactly on time.
- This format emphasized precision and navigation over speed and power. Very different from the high-octane stage rallies we see today.

## A Rally Named for the Forest

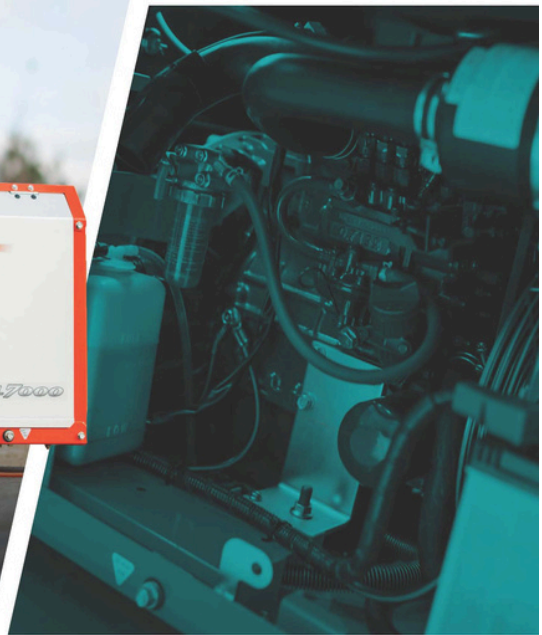
The name “Ojibwe Forests Rally” pays tribute to the rally's stunning natural surroundings in the Ojibwe (Chippewa) forest region of northern Minnesota. The event celebrates the rich woodland heritage of the area, with challenging terrain that remains a signature element of the race.

## Built by the Community

With Nielsen as the inaugural rallymaster, the event's foundation was set by volunteers, club members, and motorsport enthusiasts—establishing a legacy of community involvement, Midwestern hospitality, and passion for rallying that continues to define the event to this day.



# PROVEN PERFORMANCE. PLENTIFUL POWER.



## KUBOTA LOWBOY GENERATORS

Kubota LOWBOY generators utilize efficient, emission-certified diesel engines to provide a powerful, compact design and environmentally friendly performance for a variety of tough applications. Simple one-side maintenance makes it easy to service your generator as needed so it is always ready to power up.

Find the generator you need at  
[kubotaengine.com/generators](http://kubotaengine.com/generators)

# Kubota

